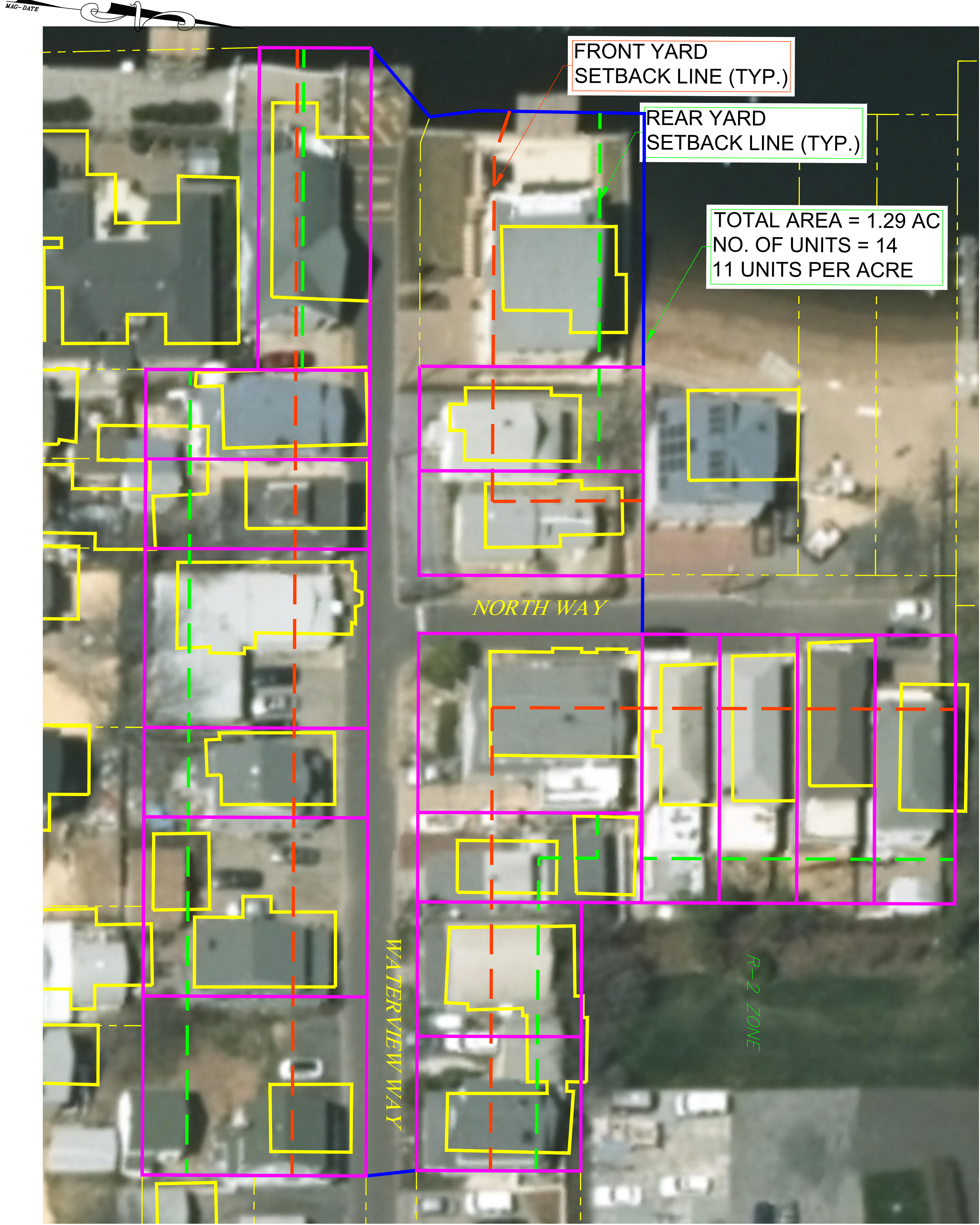


© 2019 ENGENUITY INFRASTRUCTURE. ALL RIGHTS RESERVED. REUSE OF DOCUMENTS, THESE DOCUMENTS AND DESIGNS PROVIDED BY PROFESSIONAL SERVICE, INCORPORATED HEREIN, ARE THE PROPERTY OF ENGENUITY INFRASTRUCTURE AND ARE NOT TO BE USED, IN WHOLE OR PART, FOR ANY OTHER PROJECT WITHOUT THE WRITTEN AUTHORIZATION OF ENGENUITY INFRASTRUCTURE.

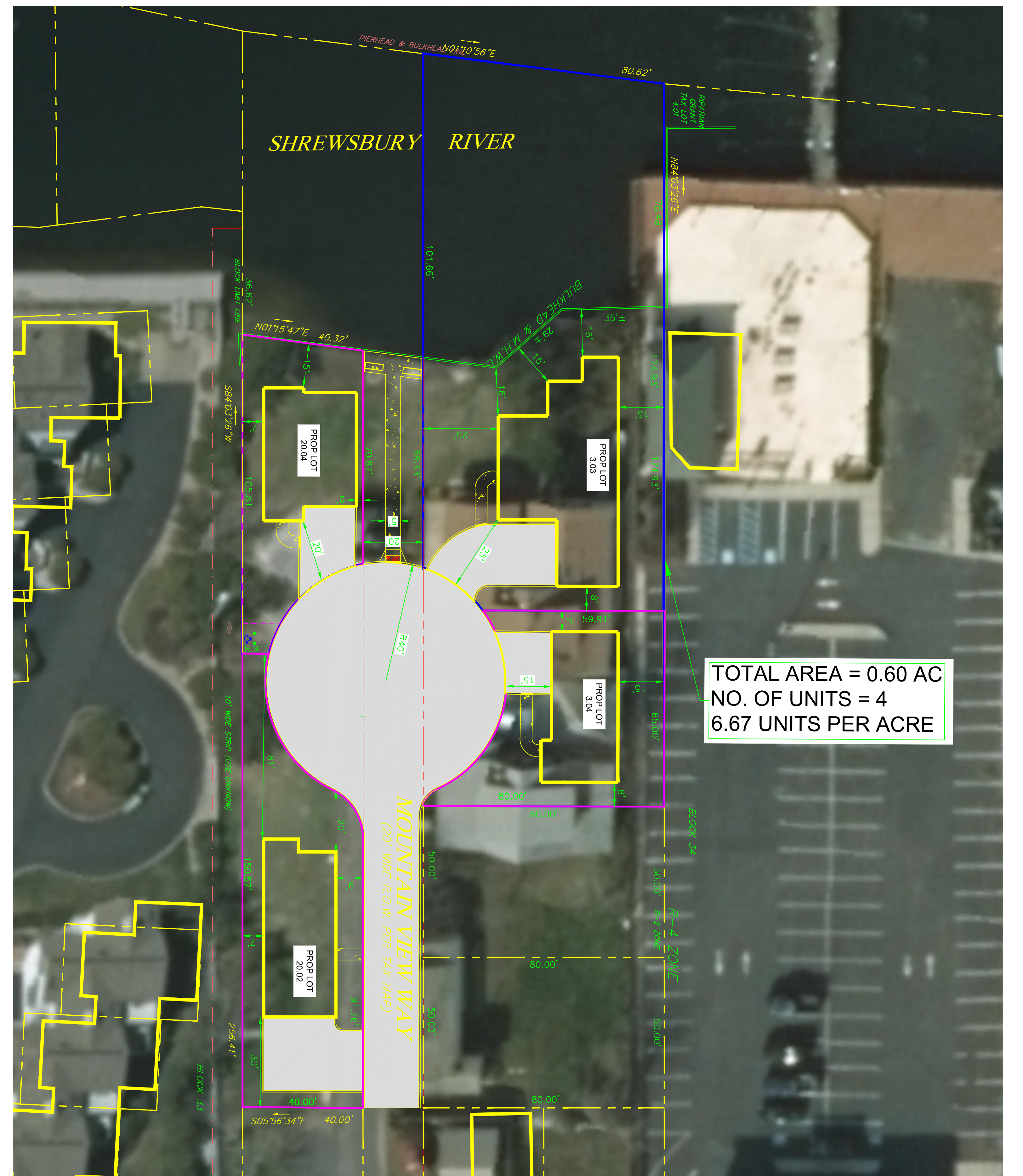
A B C D E F G H



R-2 ZONE

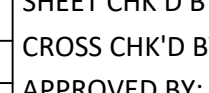
**LEGENDS**

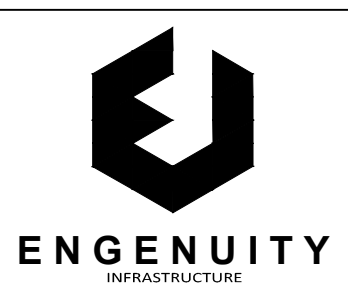
- - - FRONT YARD SETBACK LINE
- - - REAR YARD SETBACK LINE
- LOT WITH LESS THAN 25 FT FRONT SETBACK



R-2 ZONE

REV. NO.	DATE	DRWN	CHKD	REMARKS


DESIGNED BY: PAS  
 DRAWN BY: PAS  
 SHEET CHK'D BY: MJB  
 CROSS CHK'D BY: JJF  
 APPROVED BY:   
 DATE: NOVEMBER 25, 2020



**ENGENUITY INFRASTRUCTURE**  
 2 BRIDGE AVENUE, SUITE 323  
 RED BANK, NJ 07701  
 732.741.3176  
 ENGENUITYNJ.COM

**DENSITY COMPARISON**  
**CUL-DE-SAC DESIGN**  
 TAX BLOCK 33, LOT 20.02  
 TAX BLOCK 34 LOTS 3.01, 3.02 & 3.03  
 BOROUGH OF SEA BRIGHT  
 MONMOUTH COUNTY, NEW JERSEY

**OWNER / DEVELOPER / APPLICANT:**  
**MOUNTAIN VIEW VILLAS**  
 SEA BRIGHT, MONMOUTH COUNTY, N.J.

JACLYN J. FLOR, P.E., P.P., C.M.E.  
 CONSULTING ENGINEER  
  
 LICENSED PROFESSIONAL ENGINEER  
 STATE OF NJ LICENCE NO. 24GE045426  
 CERTIFICATE OF AUTHORIZATION 24GA28268000  
 11/25/2020  
 DATE

PROJECT NO. MUHL-00010  
 DRAWING AR-EX-11  
 SHEET NO. 1 OF 1