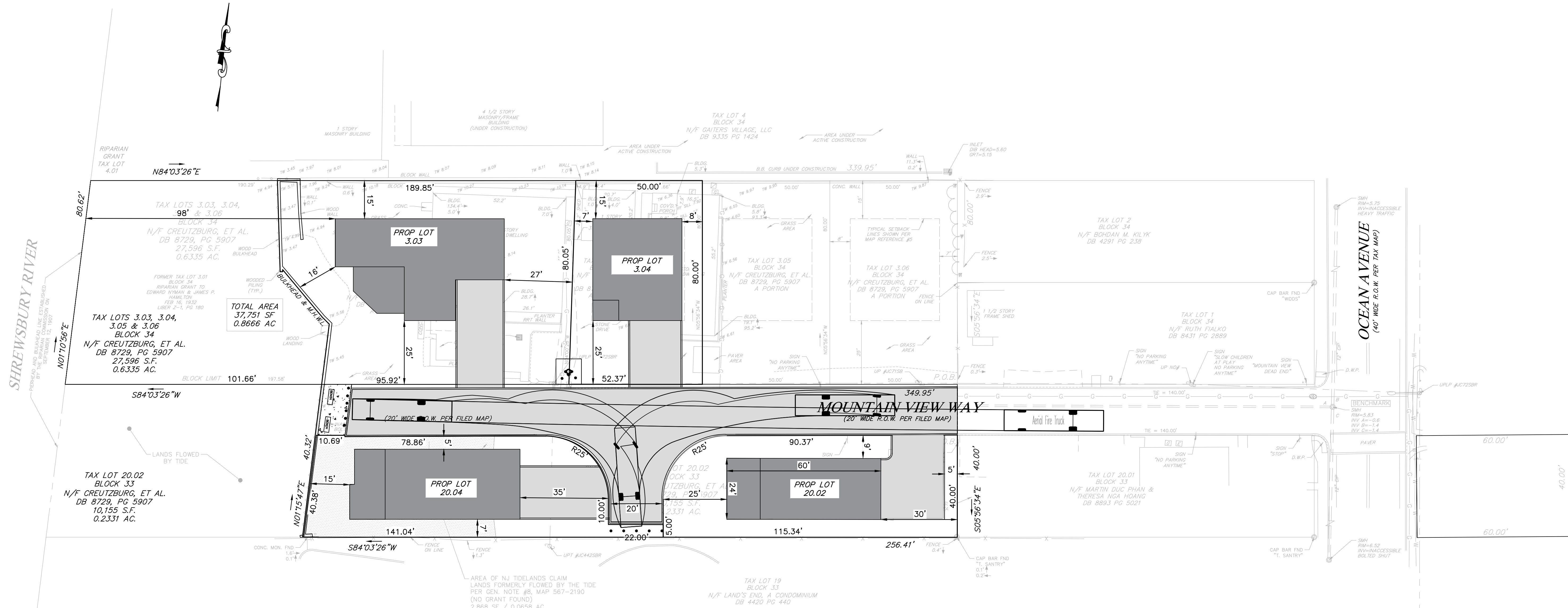
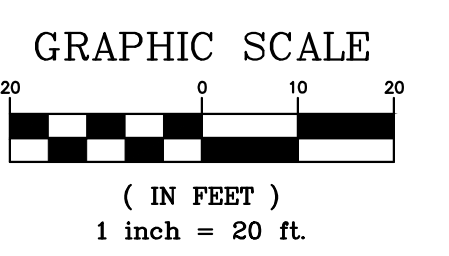


© 2019 ENGENUITY INFRASTRUCTURE ALL RIGHTS RESERVED. REUSE OF DOCUMENTS AND DESIGNS PROVIDED BY PROFESSIONAL SERVICE INCORPORATED HEREIN ARE THE PROPERTY OF ENGENUITY INFRASTRUCTURE AND ARE NOT TO BE USED, IN WHOLE OR PART, FOR ANY OTHER PROJECT WITHOUT THE WRITTEN AUTHORIZATION OF ENGENUITY INFRASTRUCTURE.

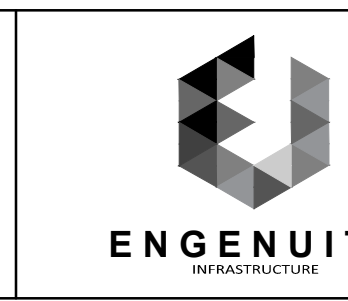


**TURNING TEMPLATE EXHIBIT**



REV. NO.	DATE	DRWN	CHKD	REMARKS

DESIGNED BY: PAS  
 DRAWN BY: PAS  
 SHEET CHK'D BY: MJB  
 CROSS CHK'D BY: MCM  
 APPROVED BY: JJE  
 DATE: NOVEMBER 20, 2020



**ENGENUITY INFRASTRUCTURE**  
 GALLERIA: 2 BRIDGE AVE., SUITE 323  
 RED BANK, NJ 07701  
 732.741.3176  
 ENGENUITYNJ.COM

**TURNING TEMPLATE EXHIBIT**  
 TAX BLOCK 33, LOT 20.02, TAX  
 BLOCK 34, LOTS 3.03 & 3.04, TAX  
 BLOCK 23, LOT 130  
 BOROUGH OF SEA BRIGHT  
 MONMOUTH COUNTY, NJ

**OWNER / DEVELOPER / APPLICANT:**  
**MOUNTAIN VIEW VILLAS AT SEA BRIGHT, LLC**  
 754 HYSLIP AVENUE  
 WESTFIELD, NJ 07090  
 (908) 264-8016

JACLYN J. FLOR, P.E., P.P., C.M.E.  
 CONSULTING ENGINEER  
  
 LICENSED PROFESSIONAL ENGINEER  
 STATE OF NJ LICENCE NO. 24GE045426  
 CERTIFICATE OF AUTHORIZATION 24GA28268000  
 DATE: 11/20/2020

PROJECT NO. MUHL-00010  
 DRAWING  
**EX-1**  
 SHEET NO.  
**1 OF 1**