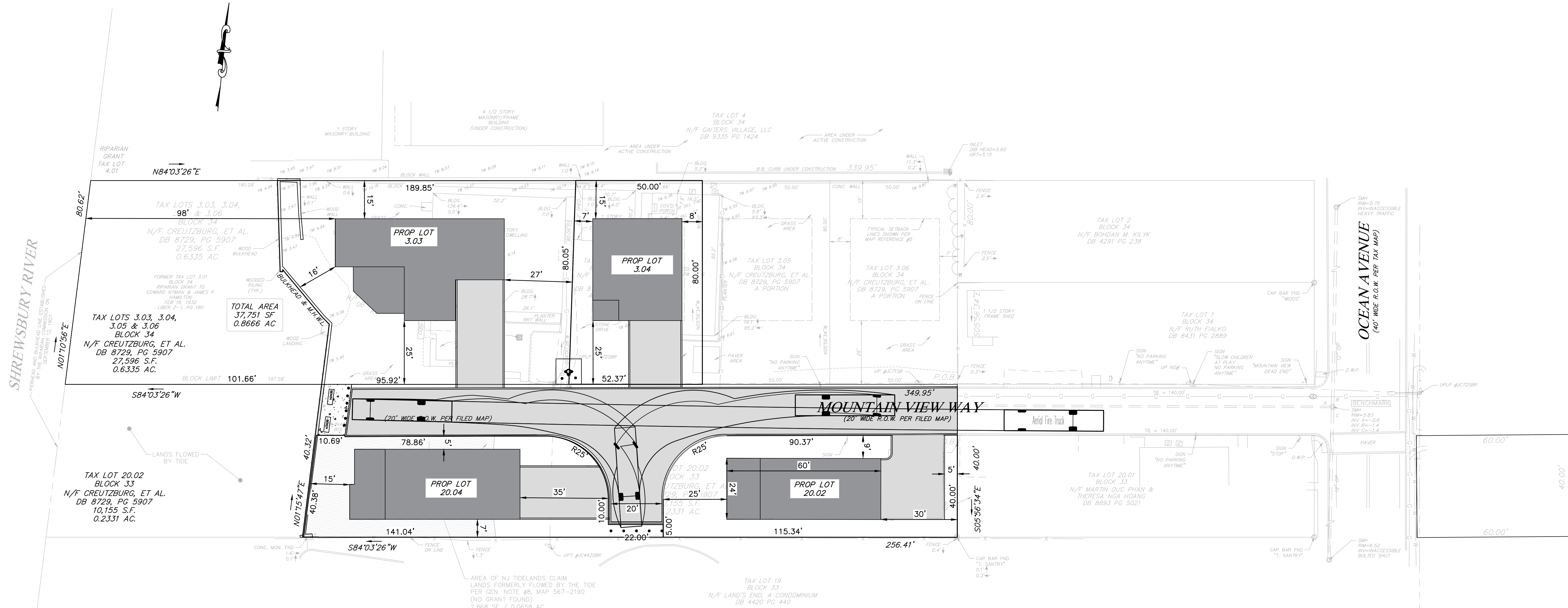
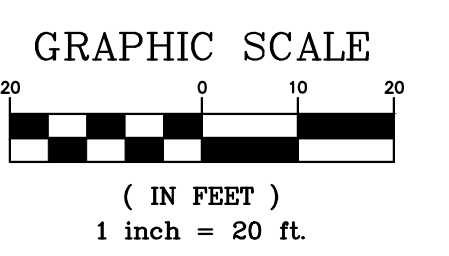


© 2019 ENGENUITY INFRASTRUCTURE ALL RIGHTS RESERVED. REUSE OF DOCUMENTS AND DESIGNS PROVIDED BY PROFESSIONAL SERVICE INCORPORATED HEREIN ARE THE PROPERTY OF ENGENUITY INFRASTRUCTURE AND ARE NOT TO BE USED, IN WHOLE OR PART, FOR ANY OTHER PROJECT WITHOUT THE WRITTEN AUTHORIZATION OF ENGENUITY INFRASTRUCTURE.

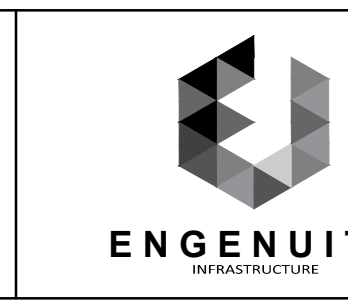


TURNING TEMPLATE EXHIBIT



REV. NO.	DATE	DRWN	CHKD	REMARKS

DESIGNED BY: PAS
 DRAWN BY: PAS
 SHEET CHK'D BY: MJB
 CROSS CHK'D BY: MCM
 APPROVED BY: JJE
 DATE: NOVEMBER 20, 2020



ENGENUITY INFRASTRUCTURE
 GALLERIA: 2 BRIDGE AVE., SUITE 323
 RED BANK, NJ 07701
 732.741.3176
 ENGENUITYNJ.COM

TURNING TEMPLATE EXHIBIT
 TAX BLOCK 33, LOT 20.02, TAX
 BLOCK 34, LOTS 3.03 & 3.04, TAX
 BLOCK 23, LOT 130
 BOROUGH OF SEA BRIGHT
 MONMOUTH COUNTY, NJ

OWNER / DEVELOPER / APPLICANT:
MOUNTAIN VIEW VILLAS AT SEA BRIGHT, LLC
 754 HYSLIP AVENUE
 WESTFIELD, NJ 07090
 (908) 264-8016

JACLYN J. FLOR, P.E., P.P., C.M.E.
 CONSULTING ENGINEER

 LICENSED PROFESSIONAL ENGINEER
 STATE OF NJ LICENCE NO. 24GE045426
 CERTIFICATE OF AUTHORIZATION 24GA28268000
 DATE: 11/20/2020

PROJECT NO. MUHL-00010
 DRAWING
EX-1
 SHEET NO.
1 OF 1