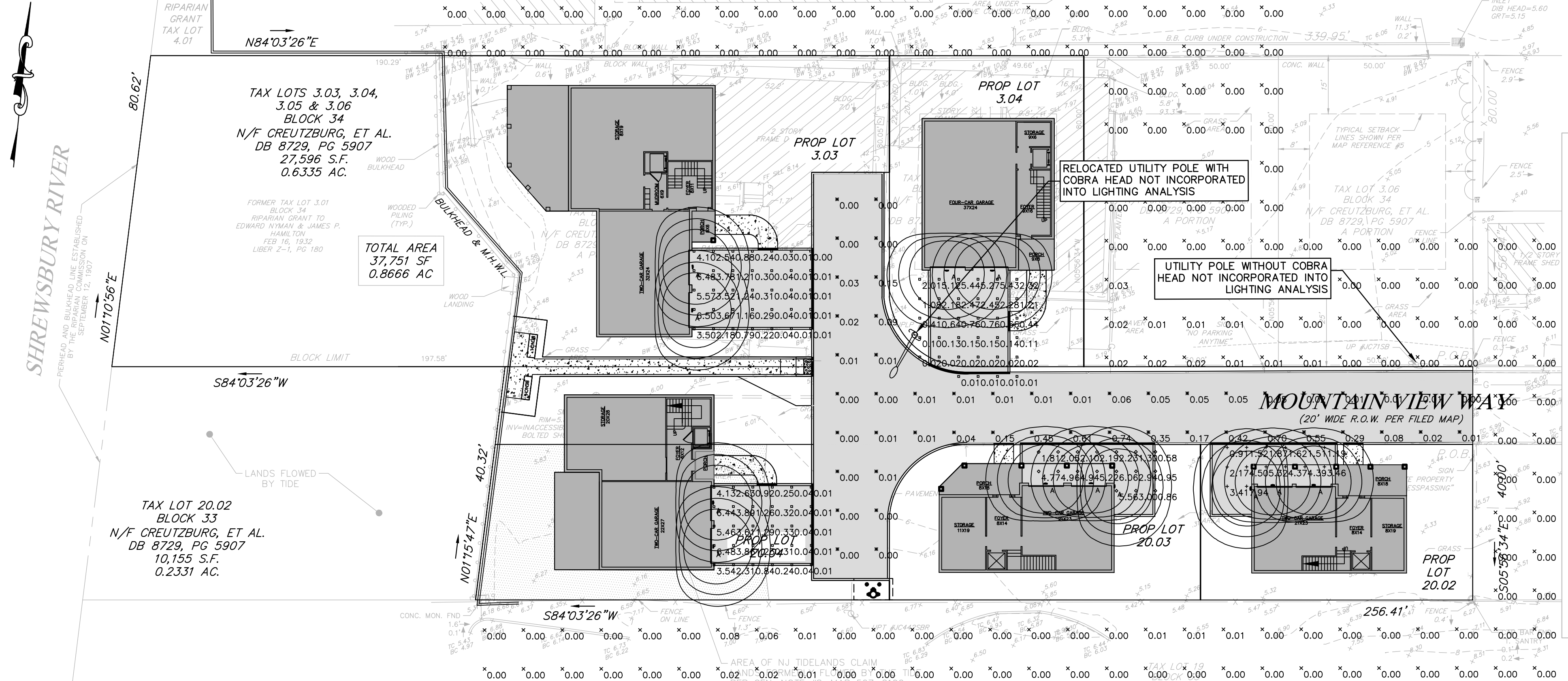


LANDSCAPE PLAN

PLANT SCHEDULE								
TREES	CODE	QTY	BOTANICAL NAME	COMMON NAME	CAL.	HT.	ROOT	COMMENTS
	GI	2	Gleditsia triacanthos inermis 'Sunburst'	Sunburst Common Honeylocust	2" - 2 1/2" CAL.		B&B	FULL SPECIMEN
	IS2	17	Ilex crenata 'Sky Pencil'	Sky Pencil Japanese Holly	---	6' - 7' HT.	B&B	FULL TO GROUND
	LW	4	Lagerstroemia x 'Natchez'	White Crape Myrtle Multi-Trunk	---	6' - 7' HT.	B&B	FULL SPECIMEN
	PO	8	Platanus occidentalis	American Sycamore	2" - 2 1/2" CAL.	6' - 7' HT.	B&B	FULL SPECIMEN
	TG	26	Thuja occidentalis 'Green Giant'	Green Giant Arborvitae	---	6' - 7' HT.	B&B	FULL TO GROUND
SHRUBS	CODE	QTY	BOTANICAL NAME	COMMON NAME	SIZE	CONTAINER	COMMENTS	
	CK	27	Calamagrostis x acutiflora 'Karl Foerster'	Feather Reed Grass	3 gal.	Pot		
	HL	11	Hydrangea paniculata 'Little Lime'	Little Lime Hydrangea	3 gal.	Pot		
	MG	15	Miscanthus sinensis 'Gracillimus'	Maiden Grass	3 gal.	Pot	FULL PLANTS	
	MM	3	Miscanthus sinensis 'Morning Light'	Eulalia Grass	---			
	PS	7	Panicum virgatum 'Shenandoah'	Shenandoah Switch Grass	3 gal.	Pot	FULL PLANTS	



LIGHTING PLAN

Schedule: MOUNTAIN VIEW WAY REV 1 6-4-2020 LLG/DMC																	
Symbol	Label	Image	QTY	Manufacturer	Catalog Number	Description	Lamp	Number Lamps	Filename	Lumens per Lamp	Lumen Multiple	LLF	Wattage	Efficiency	Distribut ion	Polar Plot	Notes
	A		12	BEGA	10W/24 374-15W-K3-24 374 K4	Converted by LUMCAL V 25.10.2016 / H.R.	LED 12,3W	1	24374K4_BEGA_JES.lvs	1077	1	0.9	15	100%			

LED wall luminaires - directed

Application: LED wall mounted luminaires with directed light designed to be mounted at various heights for general purpose illumination or glare free illumination in various use cases.

Material: Anodized aluminum extrusion with stainless steel mounting hardware. (Stainless steel available for increased corrosion resistance.)

Finish: Matte white powder coated aluminum extrusion with stainless steel mounting hardware. (Black powder coated aluminum extrusion available for increased corrosion resistance.)

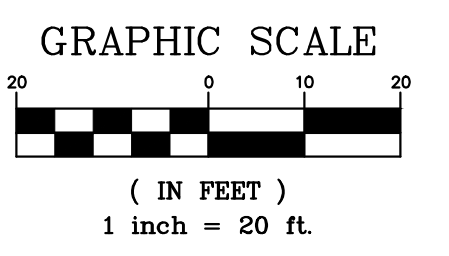
Electrical: LED module voltage: 120-277VAC, LED module wattage: 12.3W, LED module power factor: >0.95, LED module efficacy: 100 lm/W, LED color temperature: 3000K, 4000K, 5000K, 6000K, 7000K, 8000K, 9000K, 10000K, LED color rendering index: >90, LED beam angle: 15°, 30°, 45°, 60°, 75°, 90°, 120°, 150°, 180°, LED beam spread: 10°, 20°, 30°, 40°, 50°, 60°, 70°, 80°, 90°, 100°, 120°, 150°, 180°, LED beam diameter: 100mm, 150mm, 200mm, 250mm, 300mm, 350mm, 400mm, 450mm, 500mm, 550mm, 600mm, 650mm, 700mm, 750mm, 800mm, 850mm, 900mm, 950mm, 1000mm, 1050mm, 1100mm, 1150mm, 1200mm, 1250mm, 1300mm, 1350mm, 1400mm, 1450mm, 1500mm, LED beam diameter at 10m: 1000mm, 1500mm, 2000mm, 2500mm, 3000mm, 3500mm, 4000mm, 4500mm, 5000mm, 5500mm, 6000mm, 6500mm, 7000mm, 7500mm, 8000mm, 8500mm, 9000mm, 9500mm, 10000mm, LED beam diameter at 20m: 2000mm, 3000mm, 4000mm, 5000mm, 6000mm, 7000mm, 8000mm, 9000mm, 10000mm, 11000mm, 12000mm, 13000mm, 14000mm, 15000mm, LED beam diameter at 30m: 3000mm, 4500mm, 6000mm, 7500mm, 9000mm, 10500mm, 12000mm, 13500mm, 15000mm, LED beam diameter at 40m: 4000mm, 6000mm, 8000mm, 10000mm, 12000mm, 14000mm, 16000mm, LED beam diameter at 50m: 5000mm, 7500mm, 10000mm, 12500mm, 15000mm, 17500mm, LED beam diameter at 60m: 6000mm, 9000mm, 12000mm, 15000mm, 18000mm, LED beam diameter at 70m: 7000mm, 10500mm, 14000mm, 17500mm, LED beam diameter at 80m: 8000mm, 12000mm, 16000mm, LED beam diameter at 90m: 9000mm, 13500mm, LED beam diameter at 100m: 10000mm, 15000mm, LED beam diameter at 120m: 12000mm, LED beam diameter at 150m: 15000mm, LED beam diameter at 200m: 20000mm, LED beam diameter at 300m: 30000mm, LED beam diameter at 400m: 40000mm, LED beam diameter at 500m: 50000mm, LED beam diameter at 600m: 60000mm, LED beam diameter at 700m: 70000mm, LED beam diameter at 800m: 80000mm, LED beam diameter at 900m: 90000mm, LED beam diameter at 1000m: 100000mm.

Notes: All BEGA standard fixtures are made of anodized aluminum powder coated with matte white or black finish. Available colors: RAL 9005 (Black), RAL 9006 (White), RAL 9010 (Grey), RAL 9011 (Black), RAL 9012 (White), RAL 9013 (Black), RAL 9014 (White), RAL 9015 (Black), RAL 9016 (White), RAL 9017 (Black), RAL 9018 (White), RAL 9019 (Black), RAL 9020 (White), RAL 9021 (Black), RAL 9022 (White), RAL 9023 (Black), RAL 9024 (White), RAL 9025 (Black), RAL 9026 (White), RAL 9027 (Black), RAL 9028 (White), RAL 9029 (Black), RAL 9030 (White).

Statistics: MOUNTAIN VIEW WAY REV 1 6-4-20

Description	Symbol	Avg	Max	Min	Max/Min	Avg/Min
DRIVEWAY # 1	+	3.16 fc	7.94 fc	0.91 fc	8.7:1	3.5:1
DRIVEWAY # 2	◇	3.03 fc	6.06 fc	0.58 fc	10.4:1	5.2:1
DRIVEWAY # 3	□	1.65 fc	6.48 fc	0.01 fc	648.0:1	165.0:1
DRIVEWAY # 4	□	1.39 fc	6.50 fc	0.00 fc	N/A	N/A
DRIVEWAY # 5	□	1.23 fc	5.44 fc	0.01 fc	544.0:1	123.0:1
MOUNTAIN VIEW WAY	×	0.11 fc	0.74 fc	0.00 fc	N/A	N/A
OFF SITE	×	0.00 fc	0.08 fc	0.00 fc	N/A	N/A

GENERAL NOTES:
 1. APPLICANT SHALL REQUEST MEETING WITH JCP&L TO DISCUSS UTILITY POLE RELOCATION AND OBTAIN COBRA HEAD LIGHTING TYPE AND INTENSITY FOR ROADWAY.



REV. NO.	DATE	DRWN	CHKD	REMARKS

DESIGNED BY: PAS
 DRAWN BY: PAS
 SHEET CHKD BY: JUF
 CROSS CHKD BY: MCM
 APPROVED BY: JUF
 DATE: JUNE 12, 2020

ENGENUITY INFRASTRUCTURE
 GALLERIA: 2 BRIDGE AVE., SUITE 323
 RED BANK, NJ 07701
 732.741.3176
 ENGENUITYNJ.COM

LIGHTING AND LANDSCAPE PLAN
 TAX BLOCK 33, LOT 20.02, TAX BLOCK 34, LOTS 3.03 & 3.04, TAX BLOCK 23, LOT 130
 BOROUGH OF SEA BRIGHT
 MONMOUTH COUNTY, NJ

OWNER / DEVELOPER / APPLICANT:
MOUNTAIN VIEW VILLAS AT SEA BRIGHT, LLC
 754 HYSLIP AVENUE
 WESTFIELD, NJ 07090
 (908) 264-8016

JACLYN J. FLOR, P.E., P.P., C.M.E.
 CONSULTING ENGINEER

 LICENSED PROFESSIONAL ENGINEER
 STATE OF NJ LICENCE NO. 24GE045426
 CERTIFICATE OF AUTHORIZATION 24GA28268000
 DATE: 06/12/2020

PROJECT NO. MUHL-00010
 DRAWING
LS/LI-1
 SHEET NO.
7 OF **11**