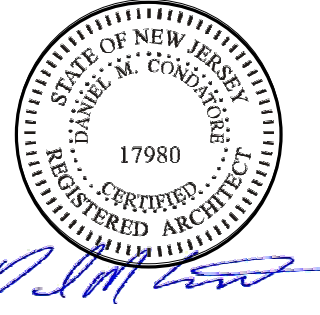
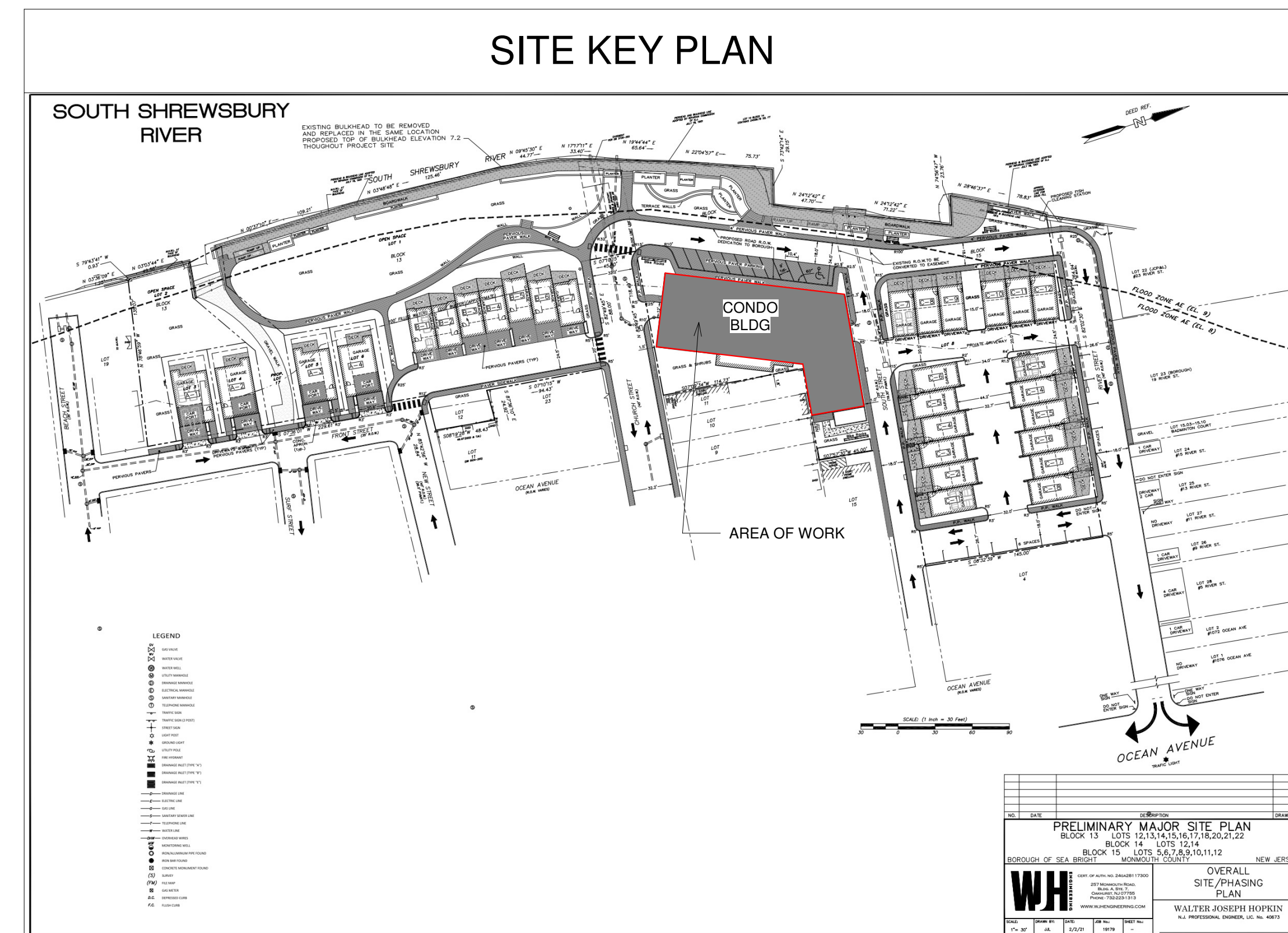


DENHOLTZ PROPERTIES

NEW TOWNHOME DEVELOPMENT - CONDOMINIUMS



DANIEL M. CONDATORE, RA
NJ License #21A01736000



DENHOLTZ PROPERTIES
NEW TOWNHOME DEVELOPMENT - CONDOMINIUMS

BLOCK: 15 LOT: 7
SEA BRIGHT, NJ

ARCHITECTURAL ABBREVIATIONS

A.F.F.	ABOVE FINISHED FLOOR	MIN.	MINIMUM
B.O.	BOTTOM OF	NO.	NUMBER
CONC.	CONCRETE	N.T.S.	NOT TO SCALE
CTR.	COUNTERTOP	O.C.	ON CENTER
DEG.	DEGREES	REQ'D.	REQUIRED
DTL.	DETAIL	R.	RADIUS
DWG.	DRAWING	T&G	TONGUE AND GROOVE
EL.	ELEVATION	T.O.	TOP OF
EQ.	EQUAL	TYP.	TYPICAL
EXIST.	EXISTING	U.N.O.	UNLESS NOTED OTHERWISE
FL.	FLOOR	V.C.T.	VINYL COMPOSITION TILE
F.R.	FIRE RATED	V.I.F.	VERIFY IN FIELD
GA.	GAUGE	V.T.R.	VENT THROUGH ROOF
GYP. BD.	GYPSUM BOARD	W/	WITH
H.M.	HOLLOW METAL	&	AND
MAX.	MAXIMUM	+/-	APPROXIMATE DIMENSION
MTL.	METAL	@	AT

PROJECT CONTACTS

OWNER
DENHOLTZ PROPERTIES
116 CHESTNUT ST #102
RED BANK, NJ 07701

T: (732) 388-3000

ATTORNEY

ARCHITECT
MODE ARCHITECTS, LLC
621 LAKE AVENUE, 3RD FLOOR
ASBURY PARK, NJ 07712

DANIEL M. CONDATORE, RA
E-MAIL: dcondatore@mode-arch.com
T: 732.800.1958

MECHANICAL, ELECTRICAL, & PLUMBING

CIVIL

STRUCTURAL

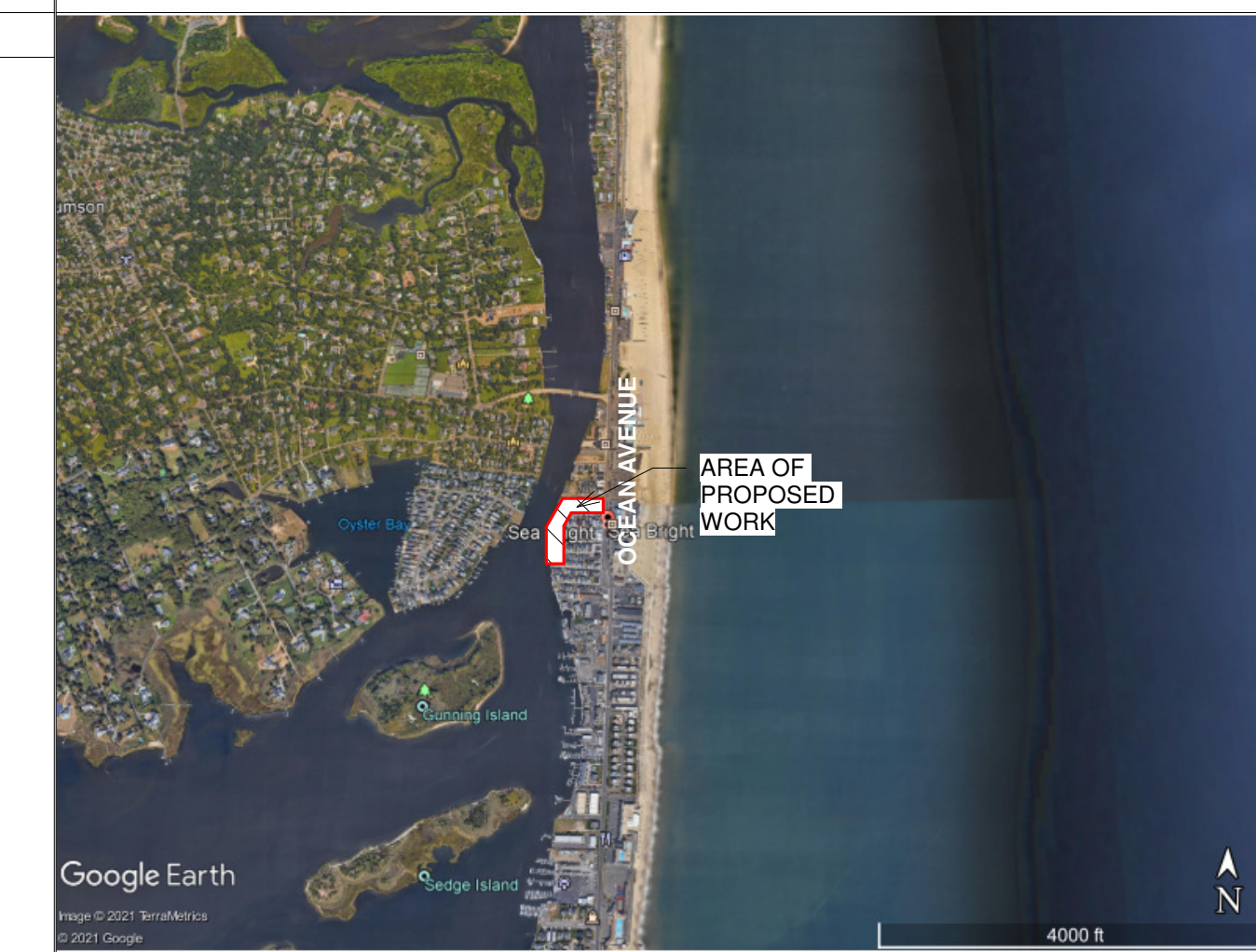
SYMBOLS LEGEND

	WALL TYPE INDICATOR		ROOM NAME		ROOM NAME AND NUMBER
	DOOR INDICATOR		EXTERIOR AND INTERIOR ELEVATION INDICATOR		FULL AND PARTIAL SECTION INDICATOR
	COLUMN LINE INDICATOR		KEYNOTE INDICATOR		EQUIPMENT INDICATOR
	PLAN ELEVATION INDICATOR		EQUIPMENT INDICATOR		COLOR INDICATOR
	ENLARGED DETAIL INDICATOR	1 DETAIL NAME			
	DETAIL INDICATOR	SCALE			

INDEX OF DRAWINGS

Sheet #	Sheet Name
.C100	COVER
A100	GROUND FLOOR PLAN
A101	LEVEL 2 FLOOR PLAN
A102	LEVEL 3 FLOOR PLAN
A103	LEVEL 4 FLOOR PLAN
A104	LEVEL 5 FLOOR PLAN
A200	BUILDING ELEVATIONS
A201	BUILDING ELEVATIONS
A202	BUILDING ELEVATIONS

VICINITY MAP

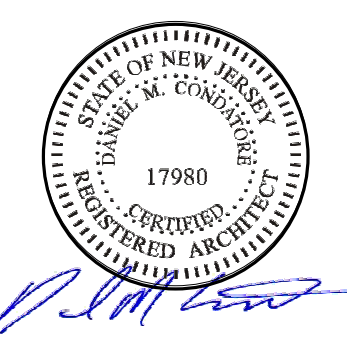


REVISIONS / ISSUES		
No.	Description	Date
1	SITE PLAN SUBMISSION	09/09/2022

COVER

.C100

DRAWN BY:
CHECKED BY: DMC



DANIEL M. CONDATORE, RA
NJ License #21A01736000

DENHOLTZ PROPERTIES
NEW TOWNHOME DEVELOPMENT - CONDOMINIUMS

BLOCK: 15 LOT: 7
SEA BRIGHT, NJ

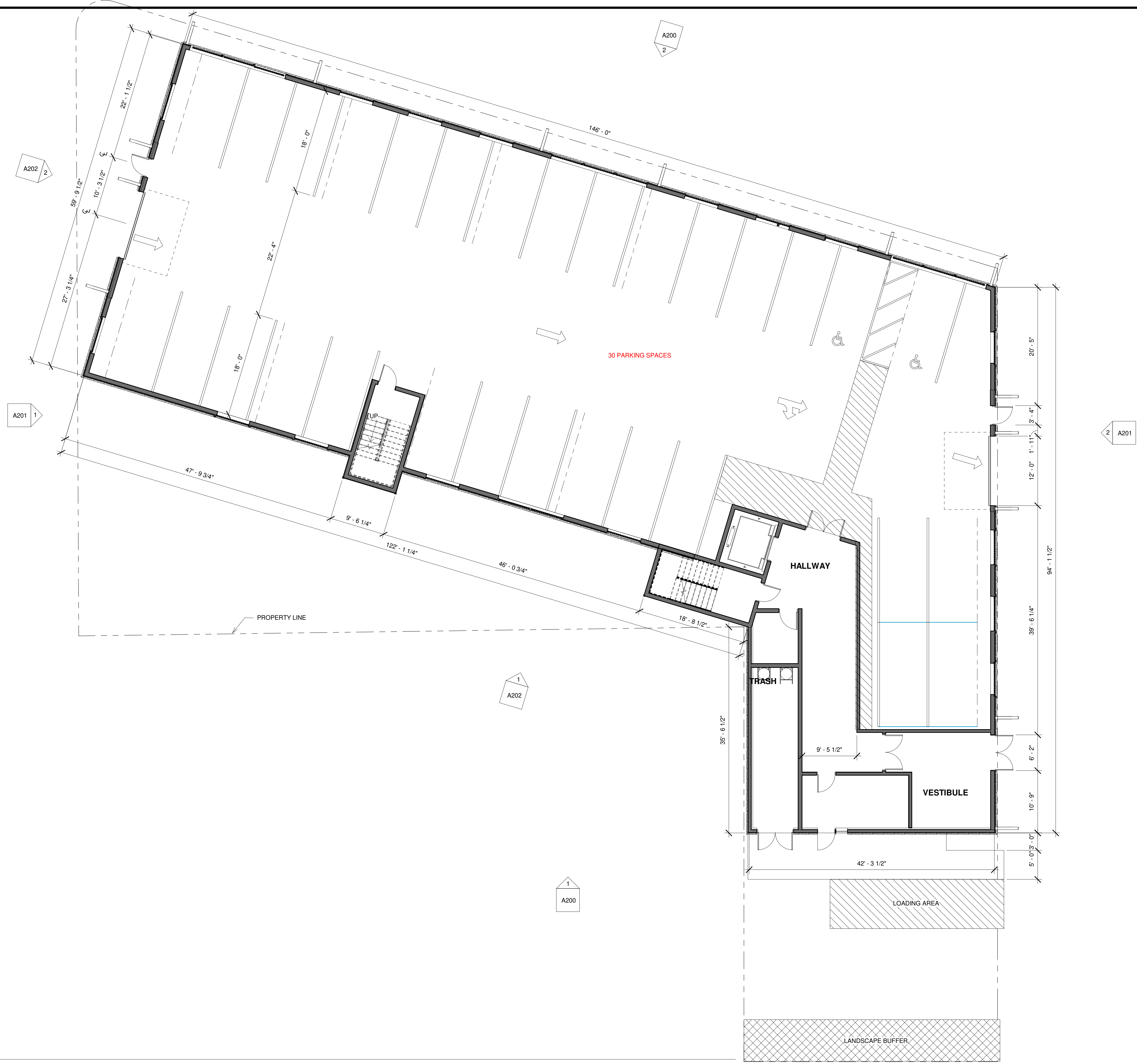
REVISIONS / ISSUES

No.	Description	Date
1	SITE PLAN SUBMISSION	09/09/2022

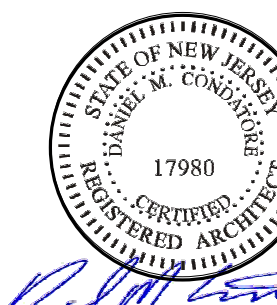
GROUND FLOOR PLAN

A100

DRAWN BY:
CHECKED BY: DMC



1 GROUND FLOOR PLAN
1/8" = 1'-0"



DANIEL M. CONDATORE, RA
NJ License #21AD178800

DENHOLTZ PROPERTIES
NEW TOWNHOME DEVELOPMENT - CONDOMINIUMS

BLOCK: 15 LOT: 7
SEA BRIGHT, NJ

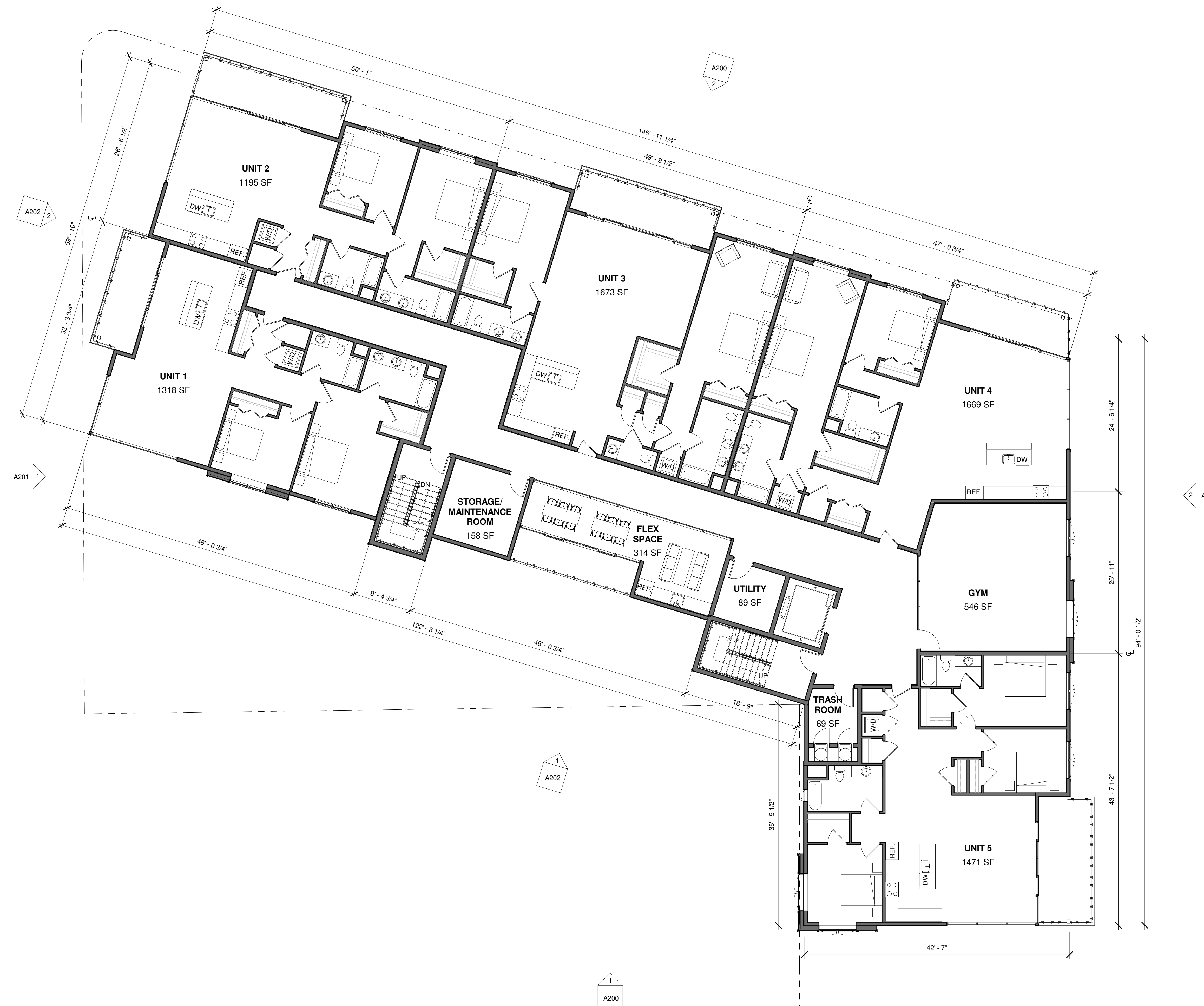
REVISIONS / ISSUES

No.	Description	Date
1	SITE PLAN SUBMISSION	09/09/2022

LEVEL 2 FLOOR
PLAN

A101

DRAWN BY:
CHECKED BY: DMC



① LEVEL 2
1/8" = 1'-0"



DANIEL M. CONDATORE, RA
NJ License #21A01736000

DENHOLTZ PROPERTIES
NEW TOWNHOME DEVELOPMENT - CONDOMINIUMS

BLOCK: 15 LOT: 7
SEA BRIGHT, NJ

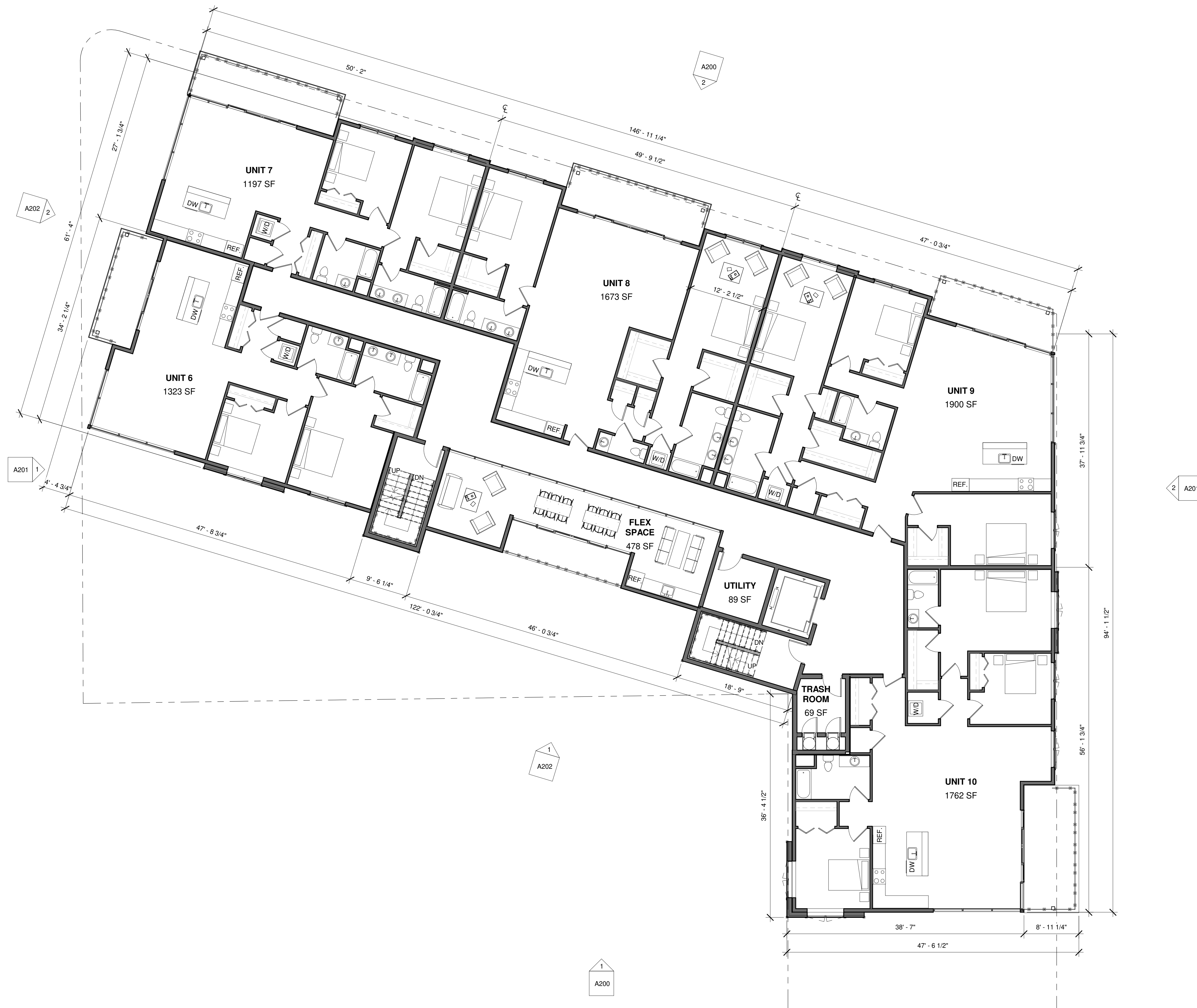
REVISIONS / ISSUES

No.	Description	Date
1	SITE PLAN SUBMISSION	09/09/2022

LEVEL 3 FLOOR
PLAN

A102

DRAWN BY:
CHECKED BY: DMC



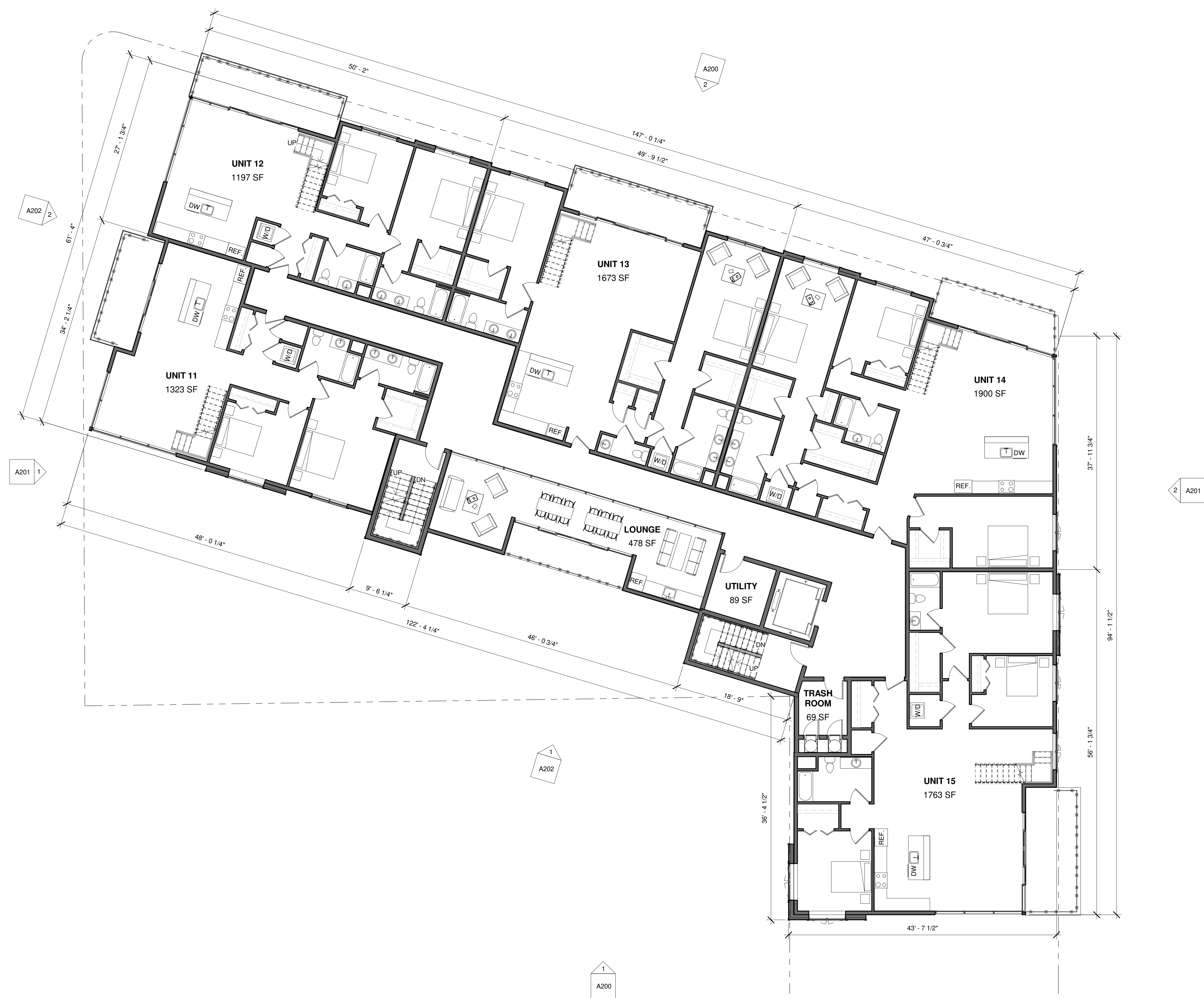
① LEVEL 3
1/8" = 1'-0"



DANIEL M. CONDATORE, RA
NJ License #21A01798000

DENHOLTZ PROPERTIES
NEW TOWNHOME DEVELOPMENT - CONDOMINIUMS

BLOCK: 15 LOT: 7
SEA BRIGHT, NJ



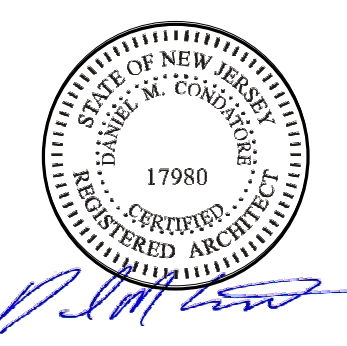
1 LEVEL 4
1/8" = 1'-0"

REVISIONS / ISSUES		
No.	Description	Date
1	SITE PLAN SUBMISSION	09/09/2022

LEVEL 4 FLOOR PLAN

A103

DRAWN BY:
CHECKED BY: DMC



DANIEL M. CONDATORE, RA
NJ License #21A01736000

DENHOLTZ PROPERTIES
NEW TOWNHOME DEVELOPMENT - CONDOMINIUMS

BLOCK: 15 LOT: 7
SEA BRIGHT, NJ

REVISIONS / ISSUES

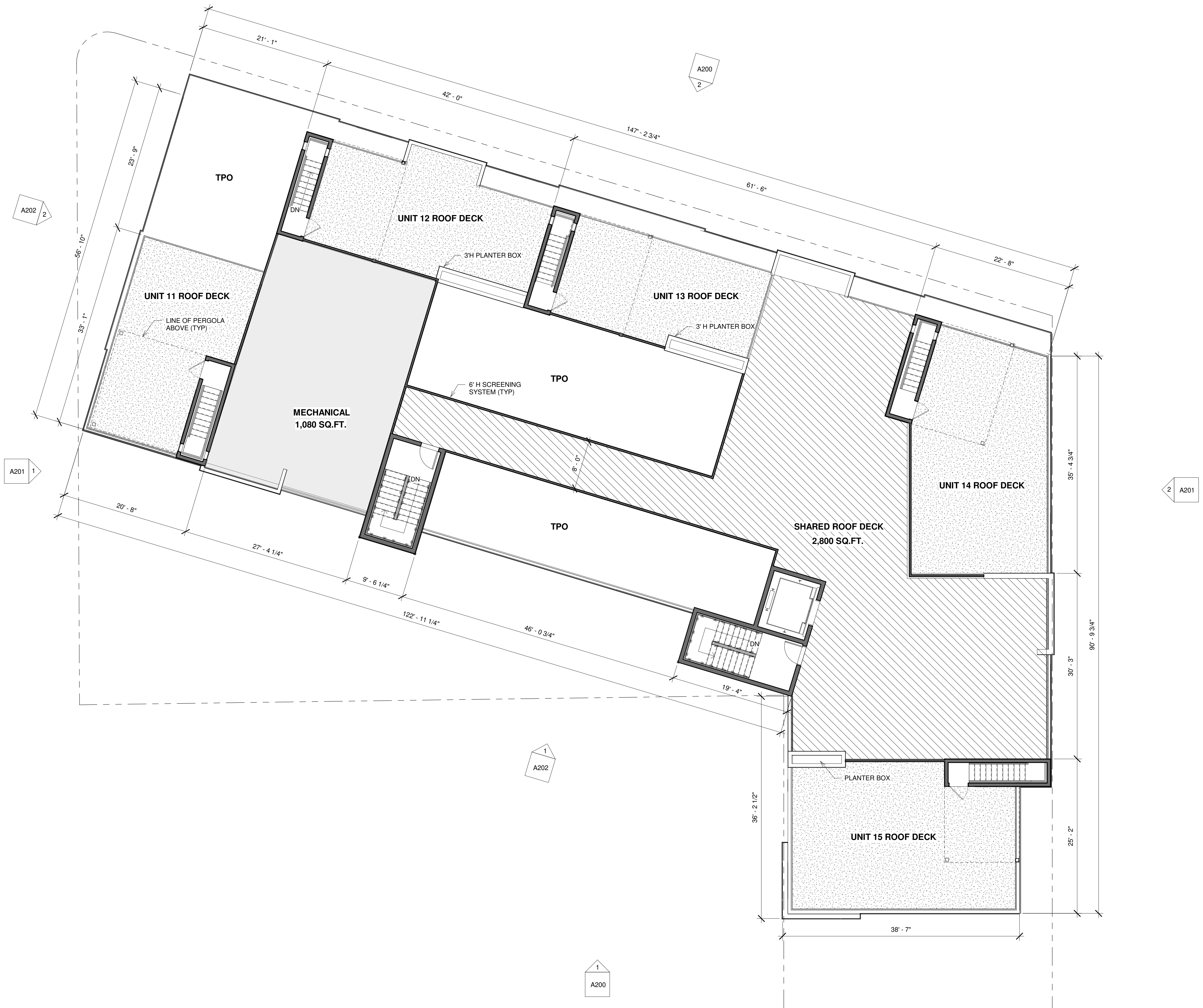
No.	Description	Date
1	SITE PLAN SUBMISSION	09/09/2022

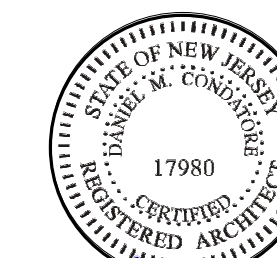
LEVEL 5 FLOOR
PLAN

A104

DRAWN BY:
CHECKED BY: DMC

1 MEZZANINE LEVEL
1/8" = 1'-0"

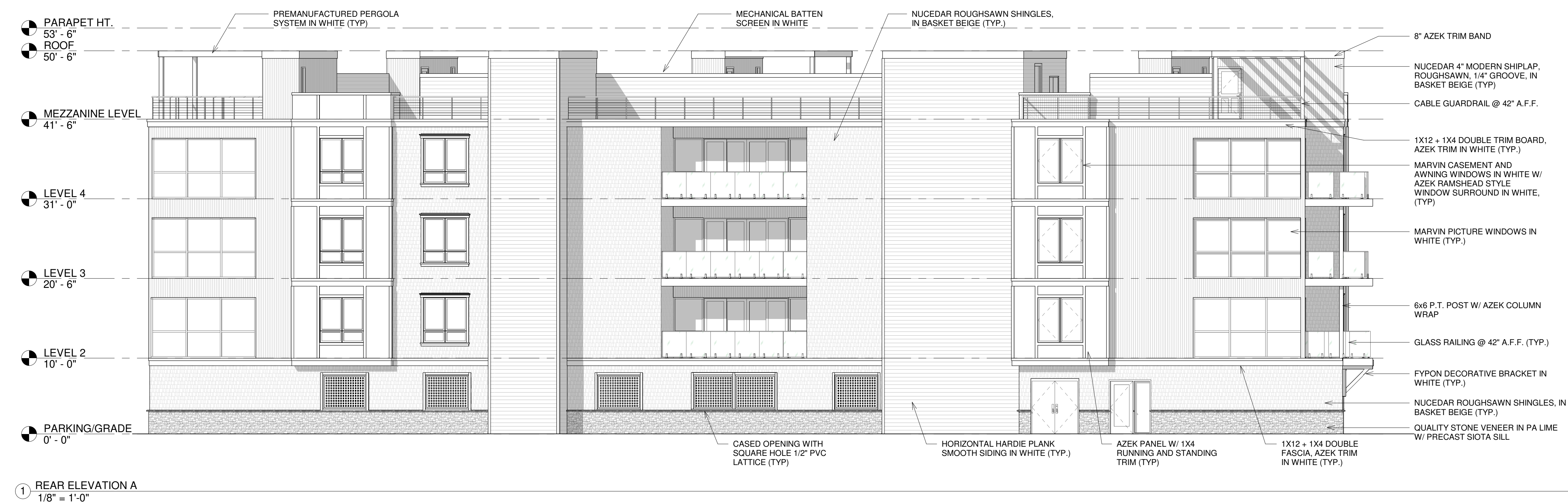
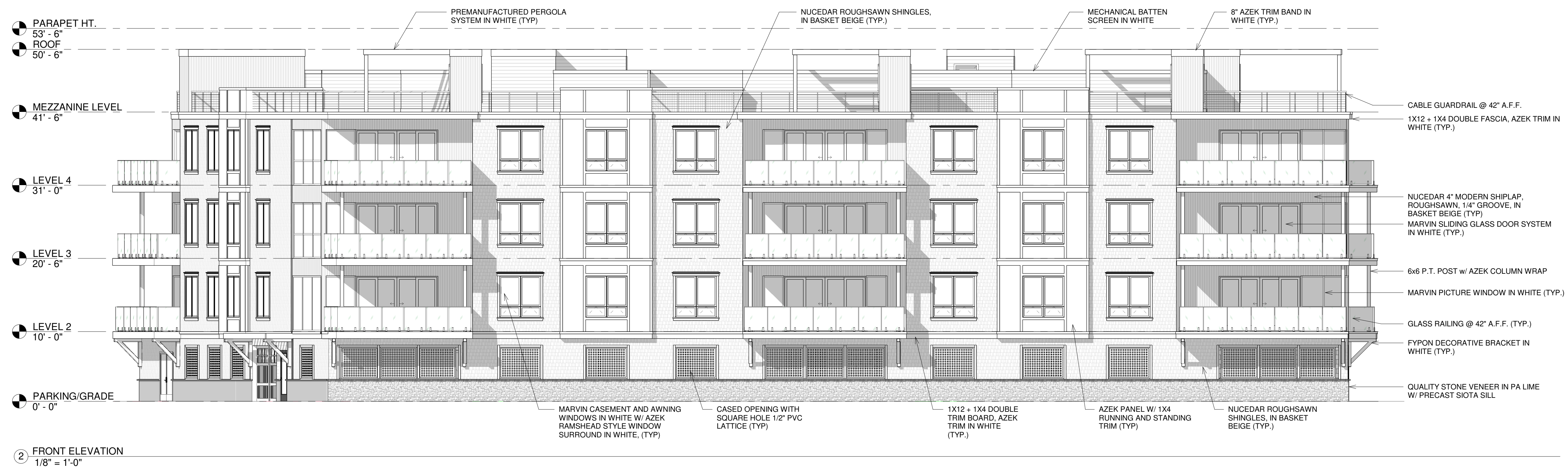




DANIEL M. CONDATORE, RA
NJ License #21A0178600

DENHOLTZ PROPERTIES
NEW TOWNHOME DEVELOPMENT - CONDOMINIUMS

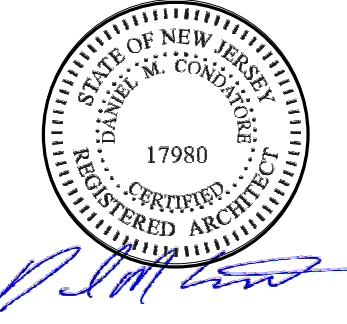
BLOCK: 15 LOT: 7
SEA BRIGHT, NJ



REVISIONS / ISSUES		
No.	Description	Date
1	SITE PLAN SUBMISSION	09/09/2022

BUILDING
ELEVATIONS

A200



DANIEL M. CONDATORE, RA
NJ License #21A0179800

DENHOLTZ PROPERTIES
NEW TOWNHOME DEVELOPMENT - CONDOMINIUMS

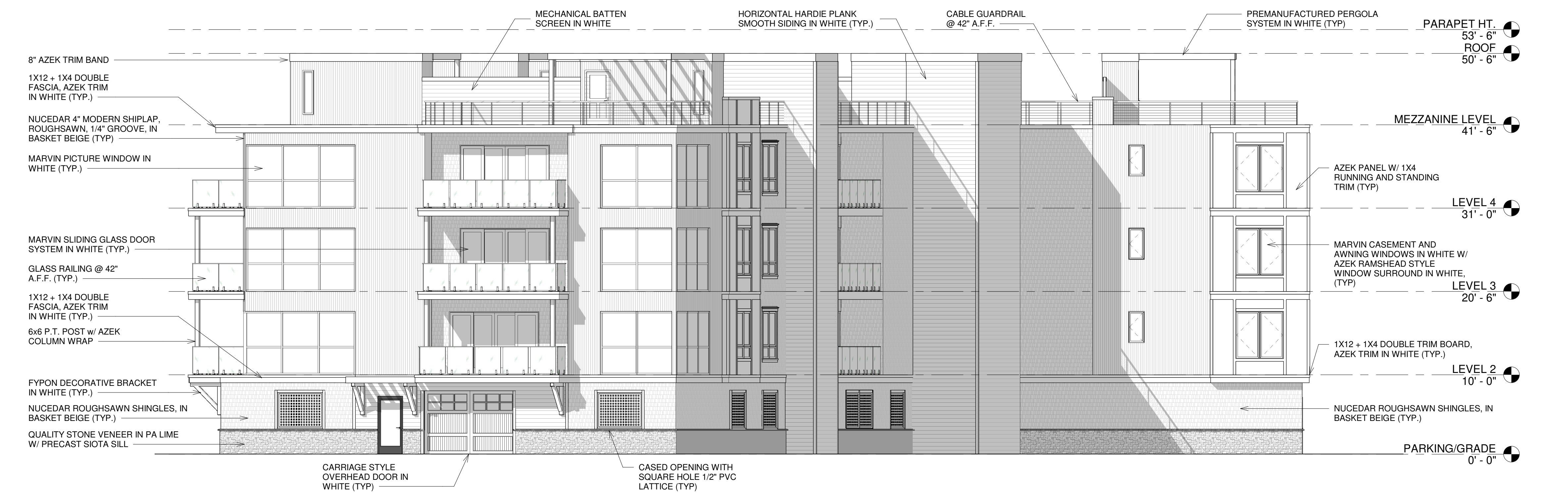
BLOCK: 15 LOT: 7
SEA BRIGHT, NJ

REVISIONS / ISSUES		
No.	Description	Date
1	SITE PLAN SUBMISSION	09/09/2022

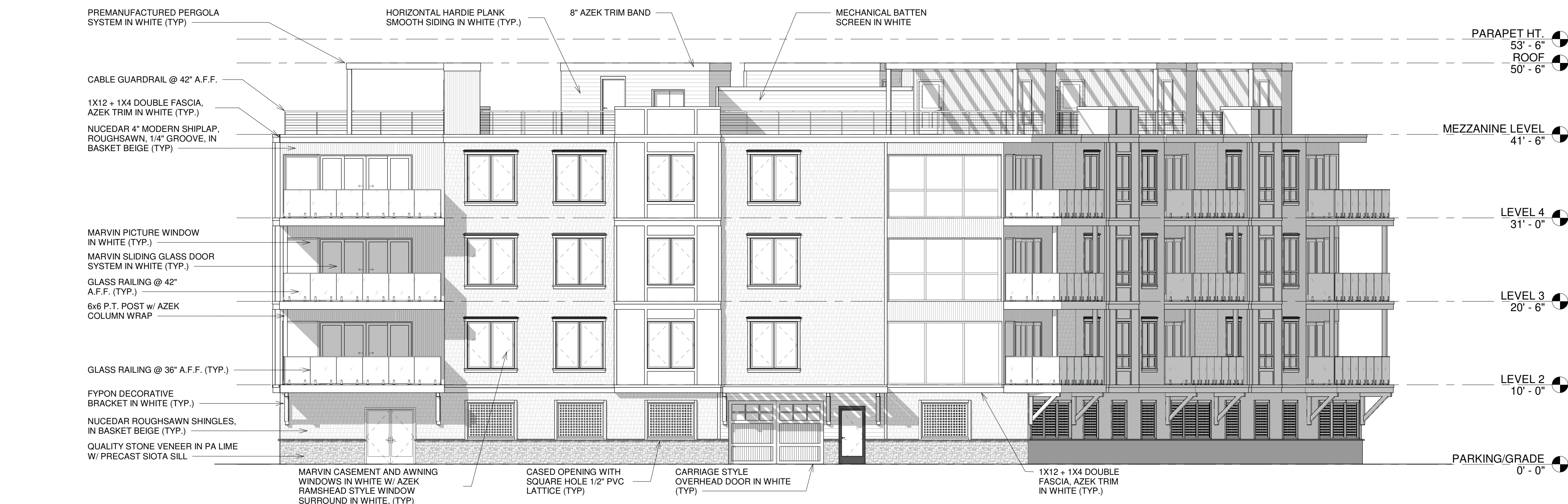
BUILDING
ELEVATIONS

A201

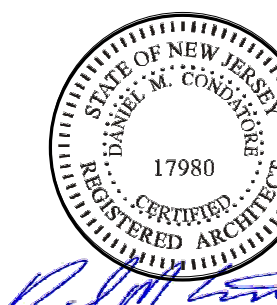
DRAWN BY:
CHECKED BY: DMC



1 RIGHT SIDE ELEVATION
1/8" = 1'-0"



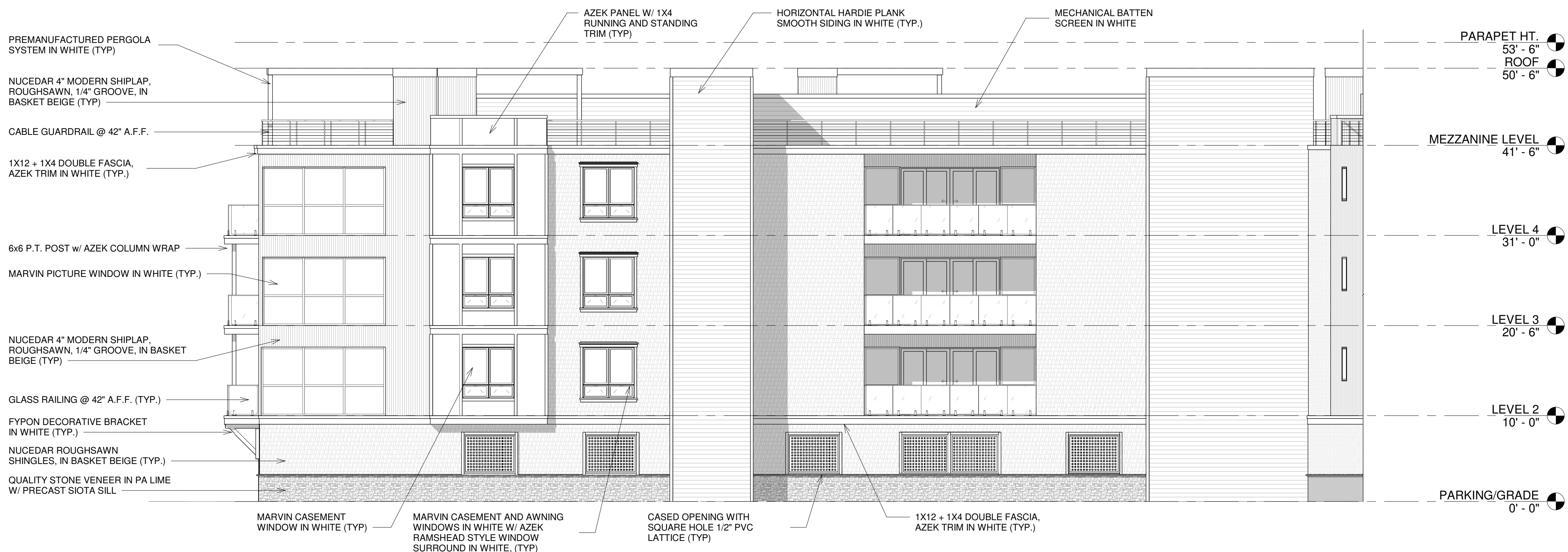
2 LEFT SIDE ELEVATION A
1/8" = 1'-0"



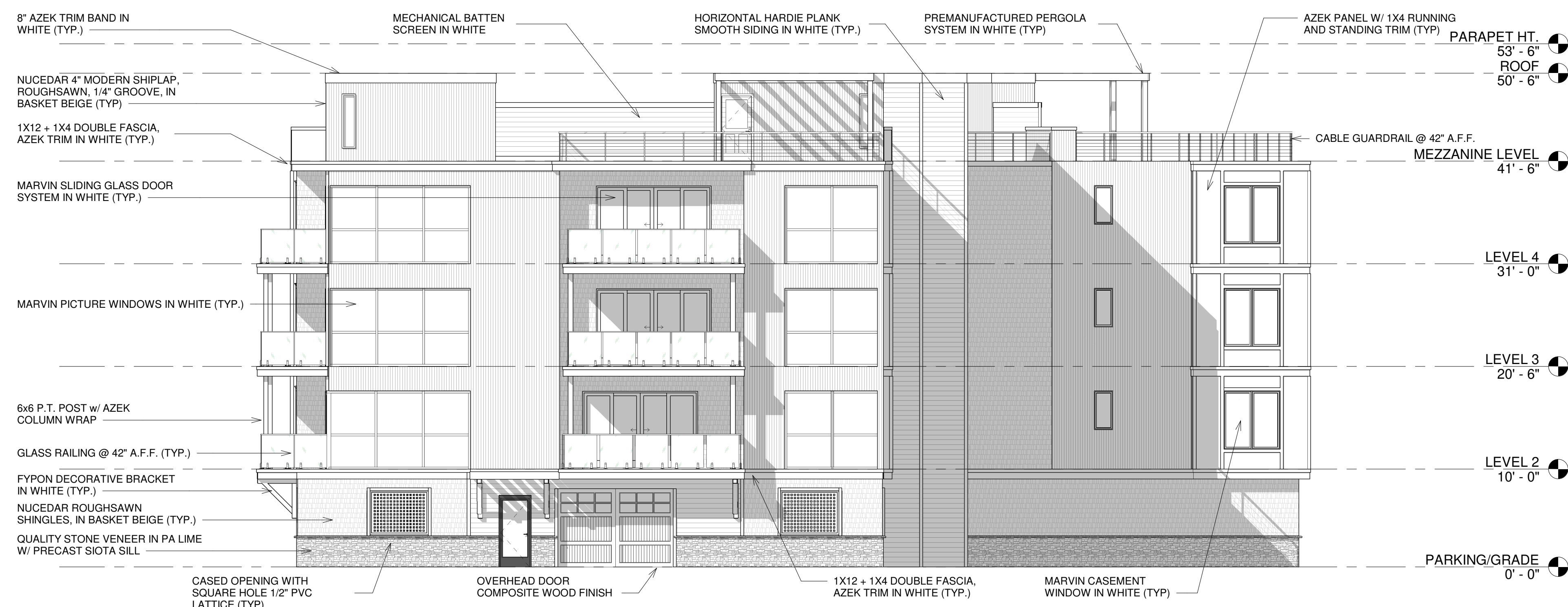
DANIEL M. CONDATORE, RA
 NJ License #21A0178600

DENHOLTZ PROPERTIES
 NEW TOWNHOME DEVELOPMENT - CONDOMINIUMS

BLOCK: 15 LOT: 7
 SEA BRIGHT, NJ



① REAR ELEVATION B
 1/8" = 1'-0"



② LEFT SIDE ELEVATION B
 1/8" = 1'-0"

REVISIONS / ISSUES		
No.	Description	Date
1	SITE PLAN SUBMISSION	09/09/2022

BUILDING ELEVATIONS

A202