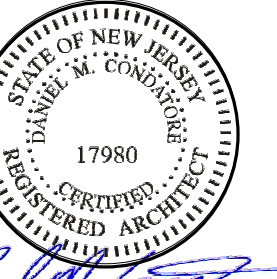
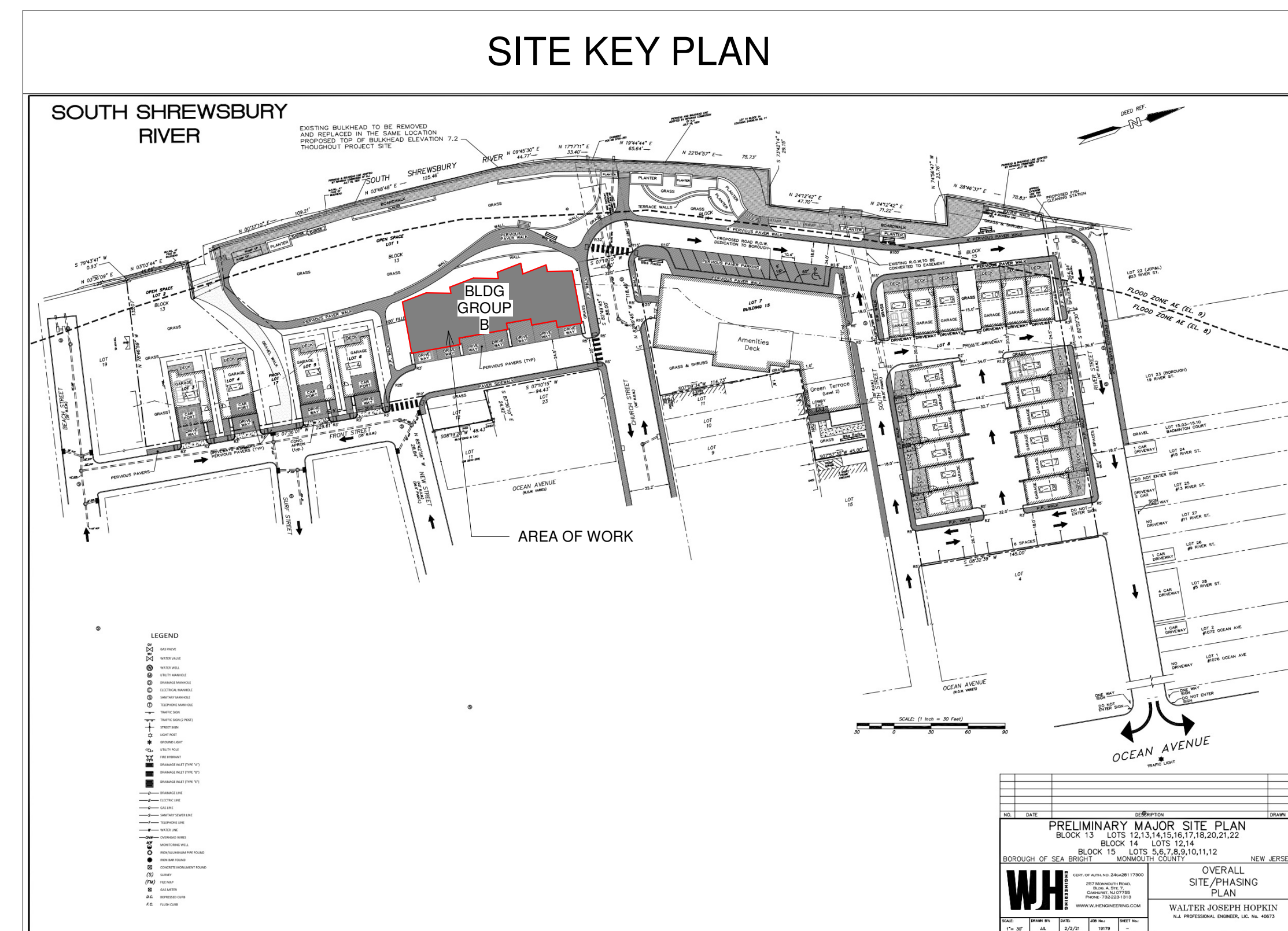


# DENHOLTZ PROPERTIES

## NEW TOWNHOME DEVELOPMENT - MODEL B



DANIEL M. CONDATORE, RA  
NJ License #21A01736000



DENHOLTZ PROPERTIES  
NEW TOWNHOME DEVELOPMENT - MODEL B  
BLOCK: 13 LOT: 12  
SEA BRIGHT, NJ

ARCHITECTURAL ABBREVIATIONS			
A.F.F.	ABOVE FINISHED FLOOR	MIN.	MINIMUM
B.O.	BOTTOM OF	NO.	NUMBER
CONC.	CONCRETE	N.T.S.	NOT TO SCALE
CTR.	COUNTERTOP	O.C.	ON CENTER
DEG.	DEGREES	REQD.	REQUIRED
DTL.	DETAIL	R.	RADIUS
DWG.	DRAWING	T&G	TONGUE AND GROOVE
EL.	ELEVATION	T.O.	TOP OF
EQ.	EQUAL	TYP.	TYPICAL
EXIST.	EXISTING	U.N.O.	UNLESS NOTED OTHERWISE
FL.	FLOOR	V.C.T.	VINYL COMPOSITION TILE
F.R.	FIRE RATED	V.I.F.	VERIFY IN FIELD
GA.	GAUGE	V.T.R.	VENT THROUGH ROOF
GYP. BD.	GYPSUM BOARD	W/	WITH
H.M.	HOLLOW METAL	&	AND
MAX.	MAXIMUM	+/-	APPROXIMATE DIMENSION
MTL.	METAL	@	AT

SYMBOLS LEGEND	
	WALL TYPE INDICATOR
	DOOR INDICATOR
	COLUMN LINE INDICATOR
	PLAN ELEVATION INDICATOR
	ENLARGED DETAIL INDICATOR
	DETAIL INDICATOR
<b>1</b>	<b>DETAIL NAME</b> SCALE
	ROOM NAME 101 ROOM NAME AND NUMBER
	EXTERIOR AND INTERIOR ELEVATION INDICATOR A5
	FULL AND PARTIAL SECTION INDICATOR 8 SIM A3
	KEYNOTE INDICATOR TB810
	EQUIPMENT INDICATOR
	COLOR INDICATOR

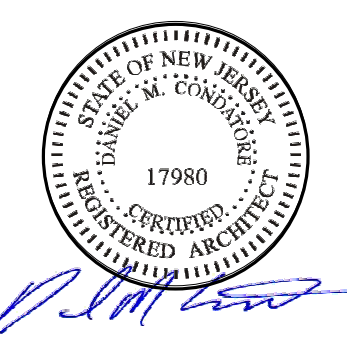
PROJECT CONTACTS	
<b>OWNER</b> DENHOLTZ PROPERTIES 116 CHESTNUT STREET / SUITE 102 RED BANK, NJ 07701 T: 732.388.3000	<b>ATTORNEY</b>
<b>ARCHITECT</b> MODE ARCHITECTS, LLC 619 LAKE AVENUE, 3RD FLOOR ASBURY PARK, NJ 07712  DANIEL M. CONDATORE, RA E-MAIL: dcondatore@mode-arch.com T: 732.800.1958	<b>MECHANICAL, ELECTRICAL, &amp; PLUMBING</b>
<b>CIVIL</b>	<b>STRUCTURAL</b>

INDEX OF DRAWINGS	
Sheet #	Sheet Name
.C100	COVER SHEET
A100	LEVEL 1 FLOOR PLAN
A101	LEVEL 2 FLOOR PLAN
A102	LEVEL 3 FLOOR PLAN
A103	LEVEL 4 FLOOR PLAN
A104	ROOF DECK FLOOR PLAN
A200	BUILDING ELEVATIONS
A201	BUILDING ELEVATIONS
A202	BUILDING ELEVATIONS
A110	ENLARGED FLOOR PLANS
A111	ENLARGED FLOOR PLANS



REVISIONS / ISSUES		
No.	Description	Date
1	SITE PLAN SUBMISSION	09/09/2022

COVER SHEET  
**.C100**  
DRAWN BY:  
CHECKED BY: DMC



DANIEL M. CONDATORE, RA  
NJ License #21A01738000

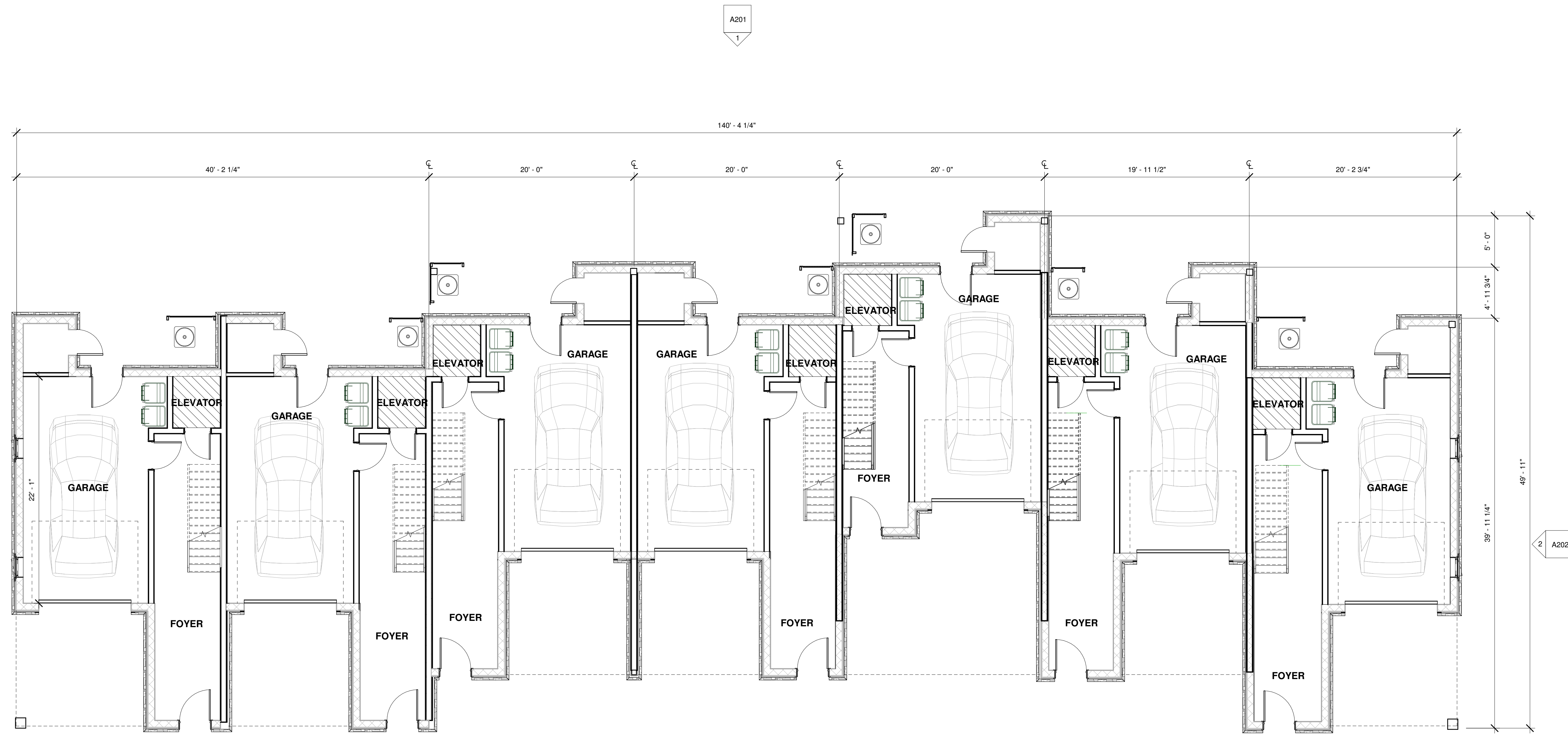
DENHOLTZ PROPERTIES  
NEW TOWNHOME DEVELOPMENT - MODEL B  
BLOCK: 13 LOT: 12  
SEA BRIGHT, NJ

REVISIONS / ISSUES		
No.	Description	Date
1	SITE PLAN SUBMISSION	09/09/2022

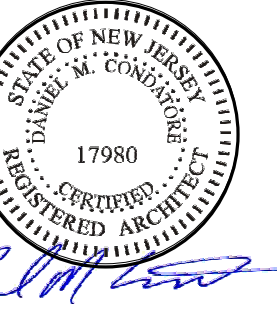
LEVEL 1 FLOOR PLAN

A100

DRAWN BY:  
CHECKED BY: DMC



① LEVEL 1 FLOOR PLAN  
3/16" = 1'-0"



DANIEL M. CONDATORE, RA  
NJ License #21A01736000

DENHOLTZ PROPERTIES  
NEW TOWNHOME DEVELOPMENT - MODEL B

BLOCK: 13 LOT: 12  
SEA BRIGHT, NJ

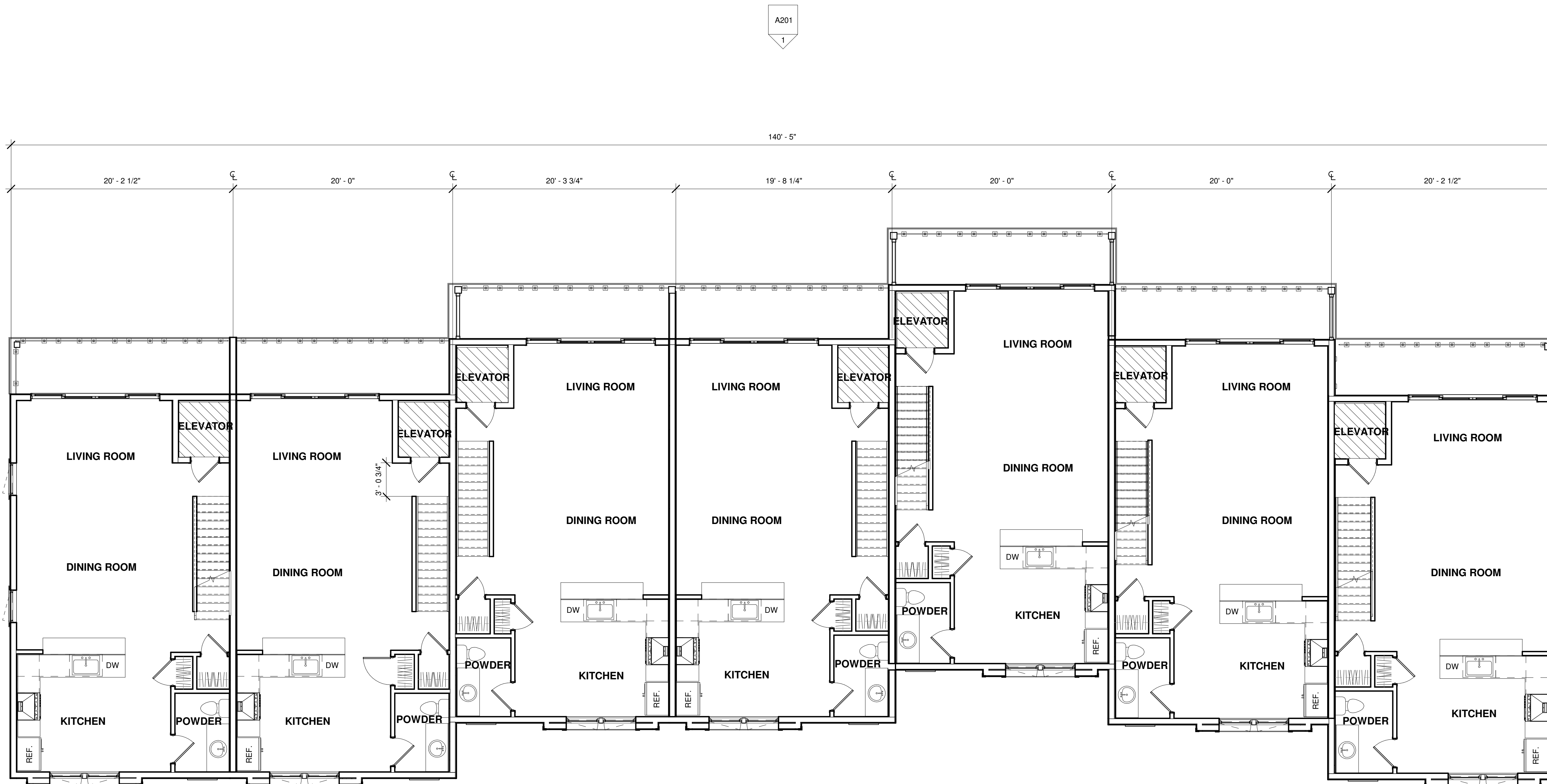
REVISIONS / ISSUES

No.	Description	Date
1	SITE PLAN SUBMISSION	09/09/2022

LEVEL 2 FLOOR  
PLAN

A101

DRAWN BY:  
CHECKED BY: DMC



A202 1

A201  
1

140' - 5"

20' - 2 1/2"

20' - 0"

20' - 3 3/4"

19' - 8 1/4"

20' - 0"

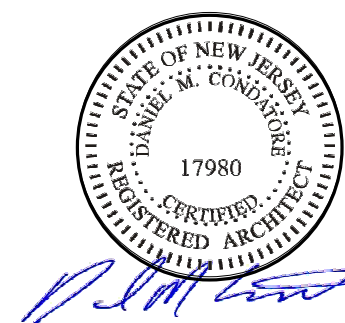
20' - 0"

20' - 2 1/2"

A200  
1

A202 2

1 LEVEL 2 FLOOR PLAN  
3/16" = 1'-0"



DANIEL M. CONDATORE, RA  
NJ License #21A01736000

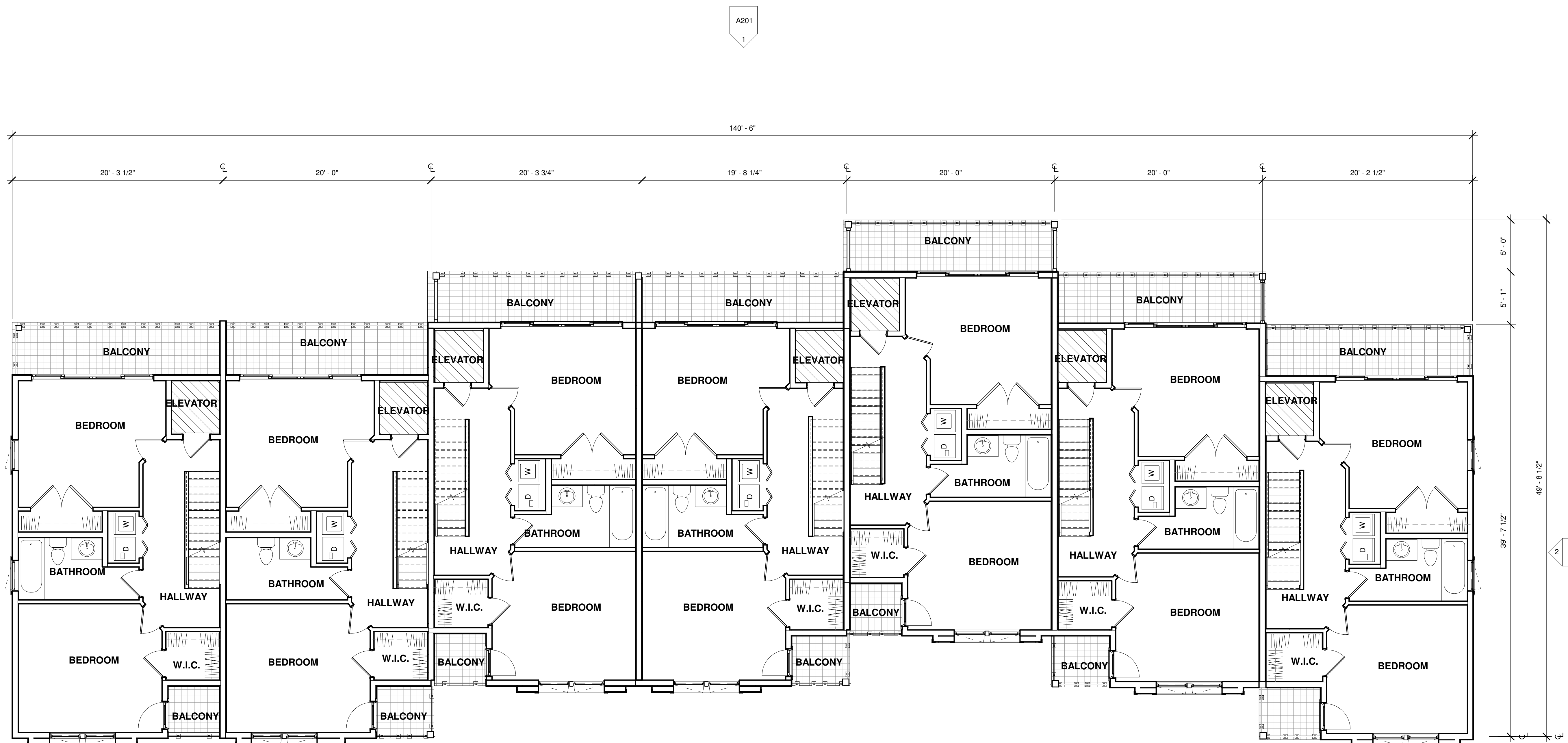
DENHOLTZ PROPERTIES  
NEW TOWNHOME DEVELOPMENT - MODEL B  
BLOCK: 13 LOT: 12  
SEA BRIGHT, NJ

REVISIONS / ISSUES		
No.	Description	Date
1	SITE PLAN SUBMISSION	09/09/2022

LEVEL 3 FLOOR PLAN

A102

DRAWN BY:  
CHECKED BY: DMC



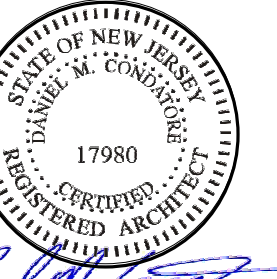
A202 1

A201  
1

1  
A200

A202 2

1 LEVEL 3 FLOOR PLAN  
3/16" = 1'-0"



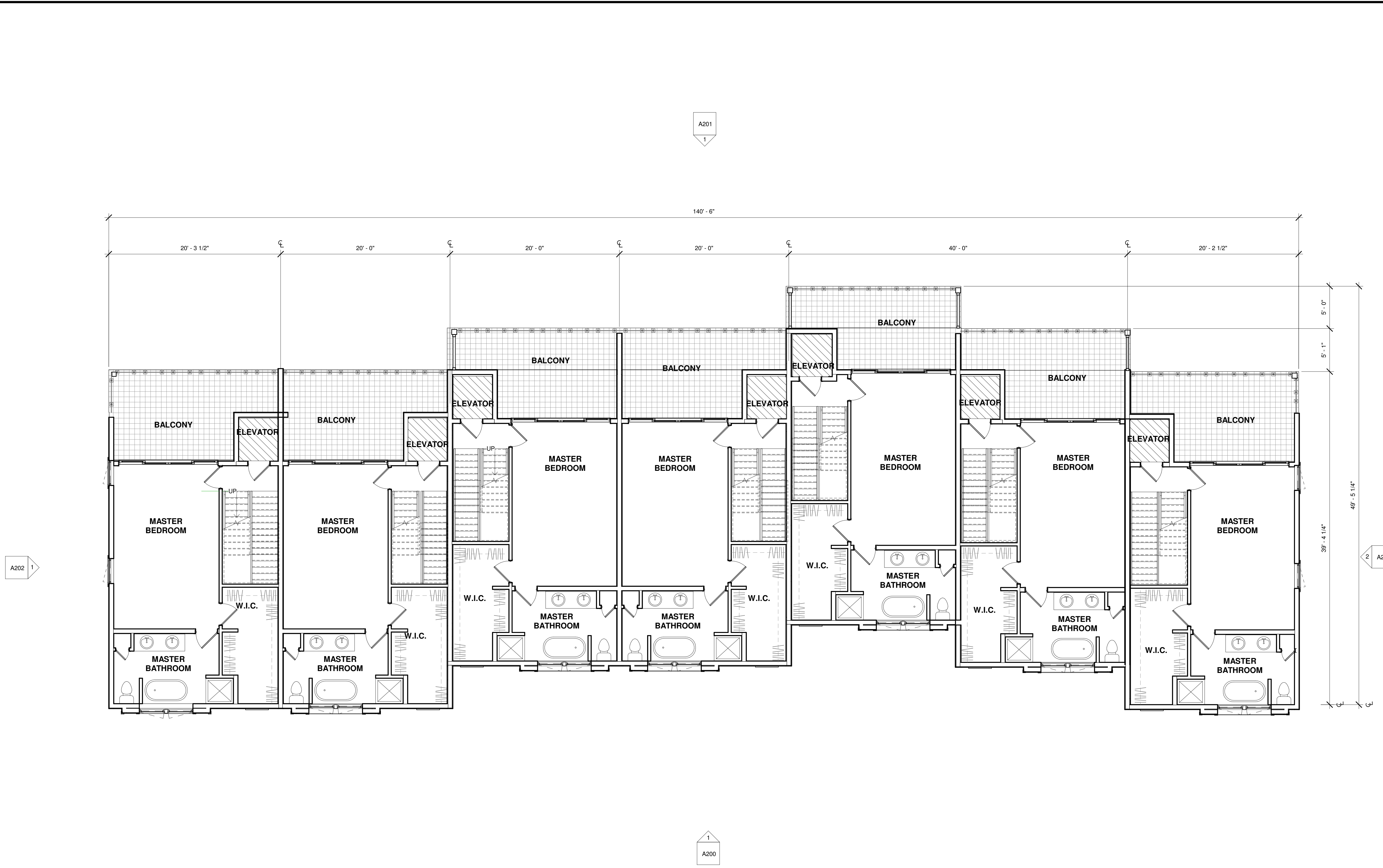
DENHOLTZ PROPERTIES  
NEW TOWNHOME DEVELOPMENT - MODEL B  
BLOCK: 13 LOT: 12  
SEA BRIGHT, NJ

REVISIONS / ISSUES

No.	Description	Date
1	SITE PLAN SUBMISSION	09/09/2022

LEVEL 4 FLOOR PLAN

A103



1 LEVEL 4 FLOOR PLAN  
3/16" = 1'-0"



DANIEL M. CONDATORE, RA  
NJ License #21A01736000

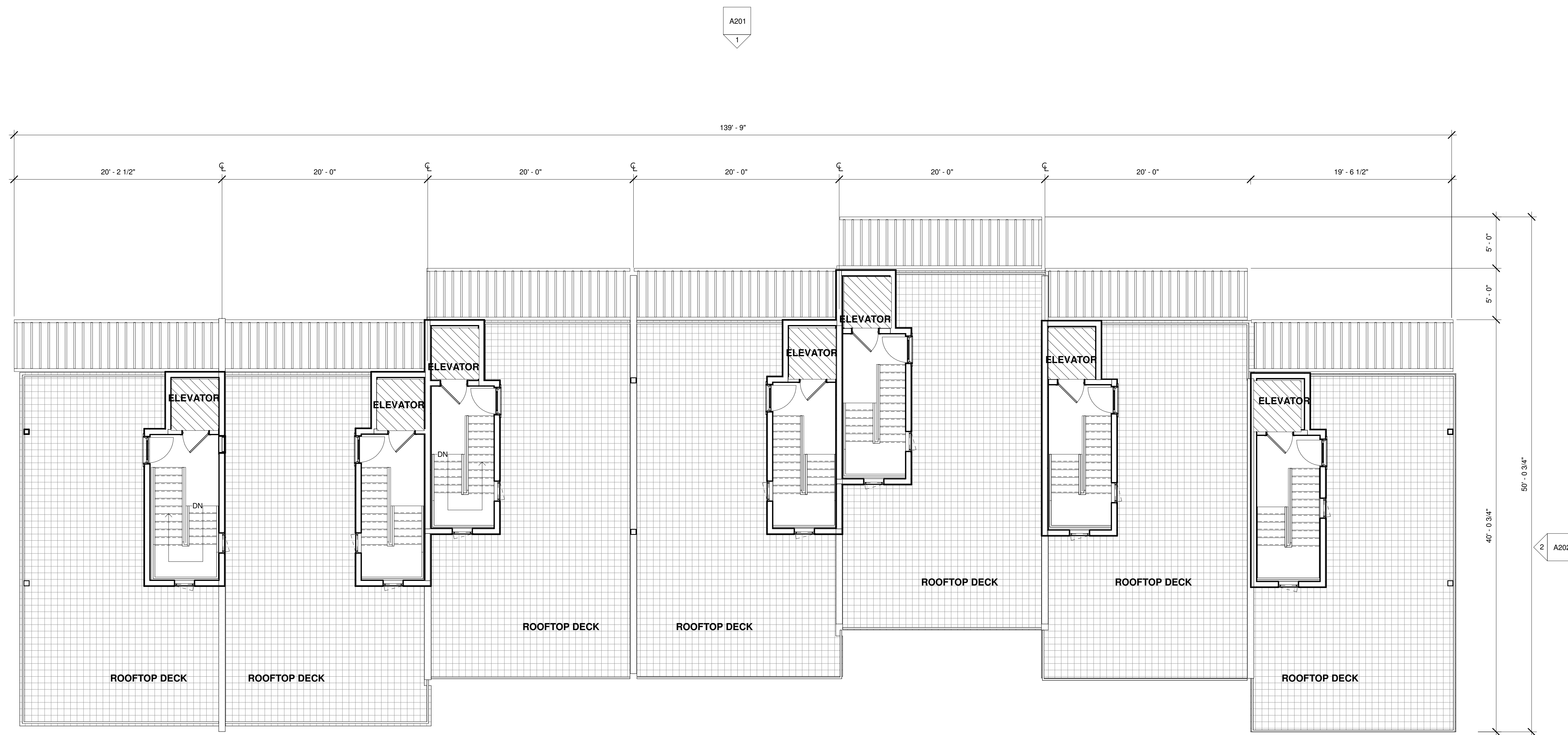
DENHOLTZ PROPERTIES  
NEW TOWNHOME DEVELOPMENT - MODEL B  
BLOCK: 13 LOT: 12  
SEA BRIGHT, NJ

REVISIONS / ISSUES		
No.	Description	Date
1	SITE PLAN SUBMISSION	09/09/2022

ROOF DECK FLOOR PLAN

A104

DRAWN BY:  
CHECKED BY: DMC



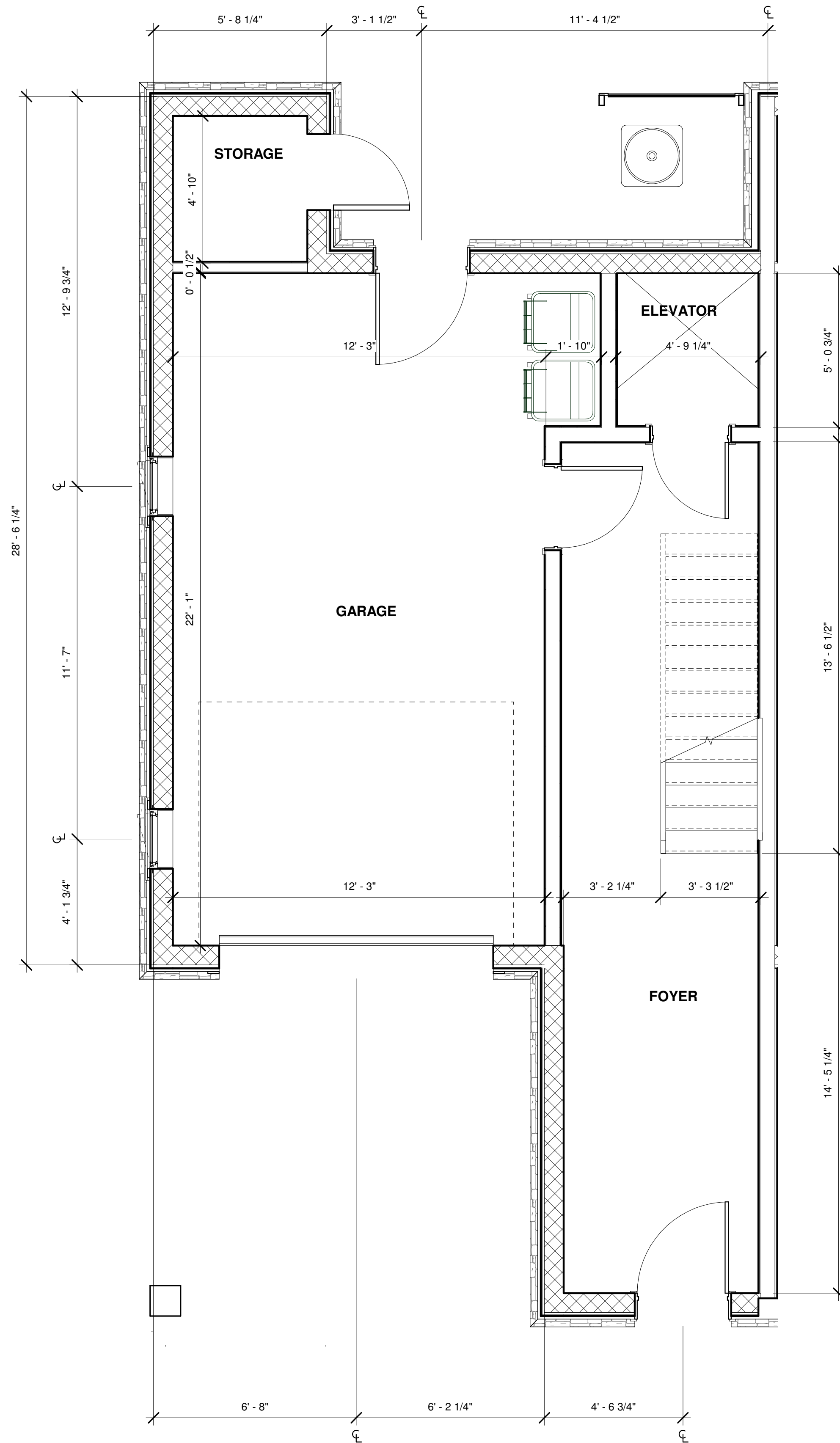
A202 1

A201  
1

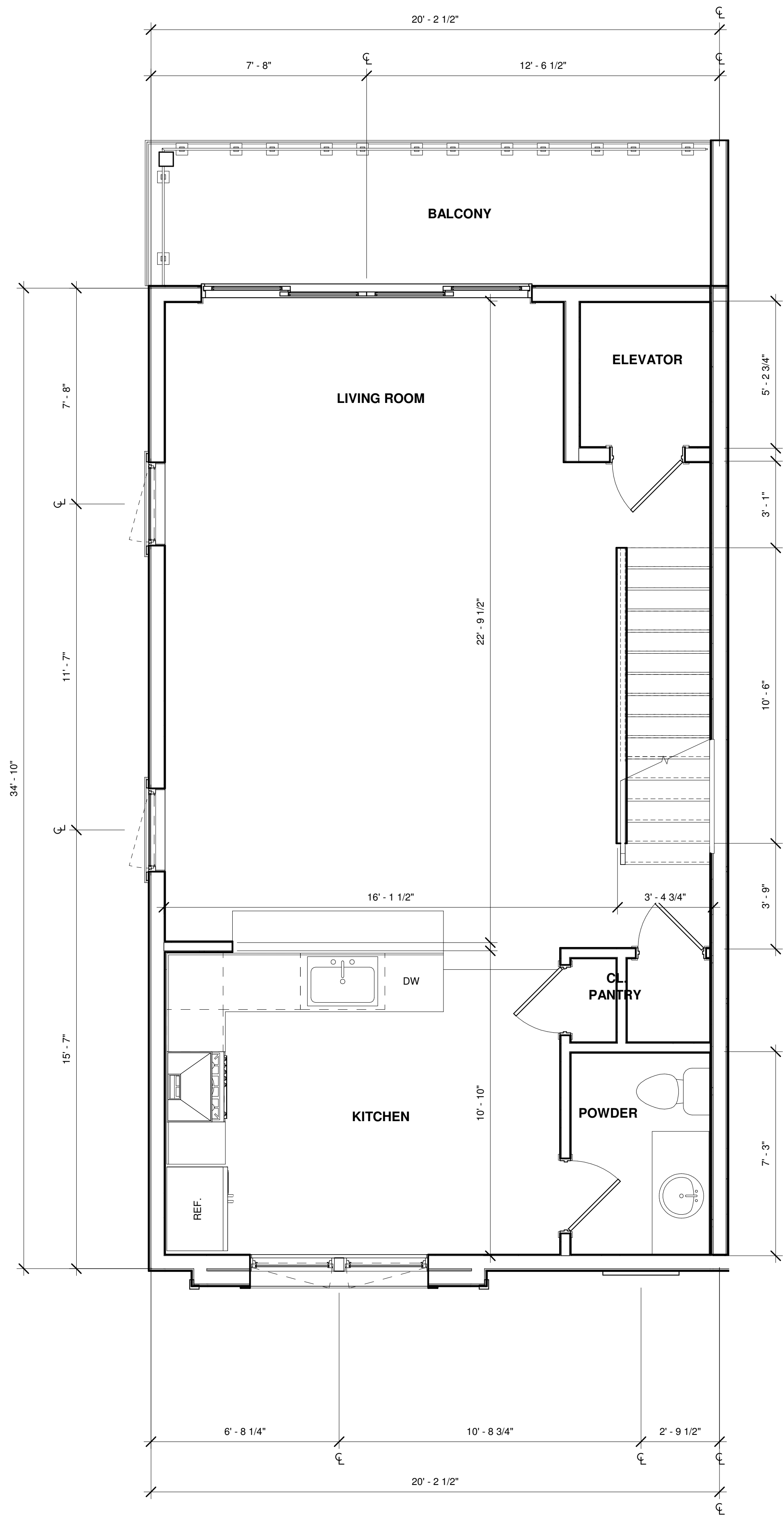
A200  
1

A202 2

1 ROOF DECK FLOOR PLAN  
3/16" = 1'-0"



① ENLARGED 1ST FLOOR PLAN  
3/8" = 1'-0"



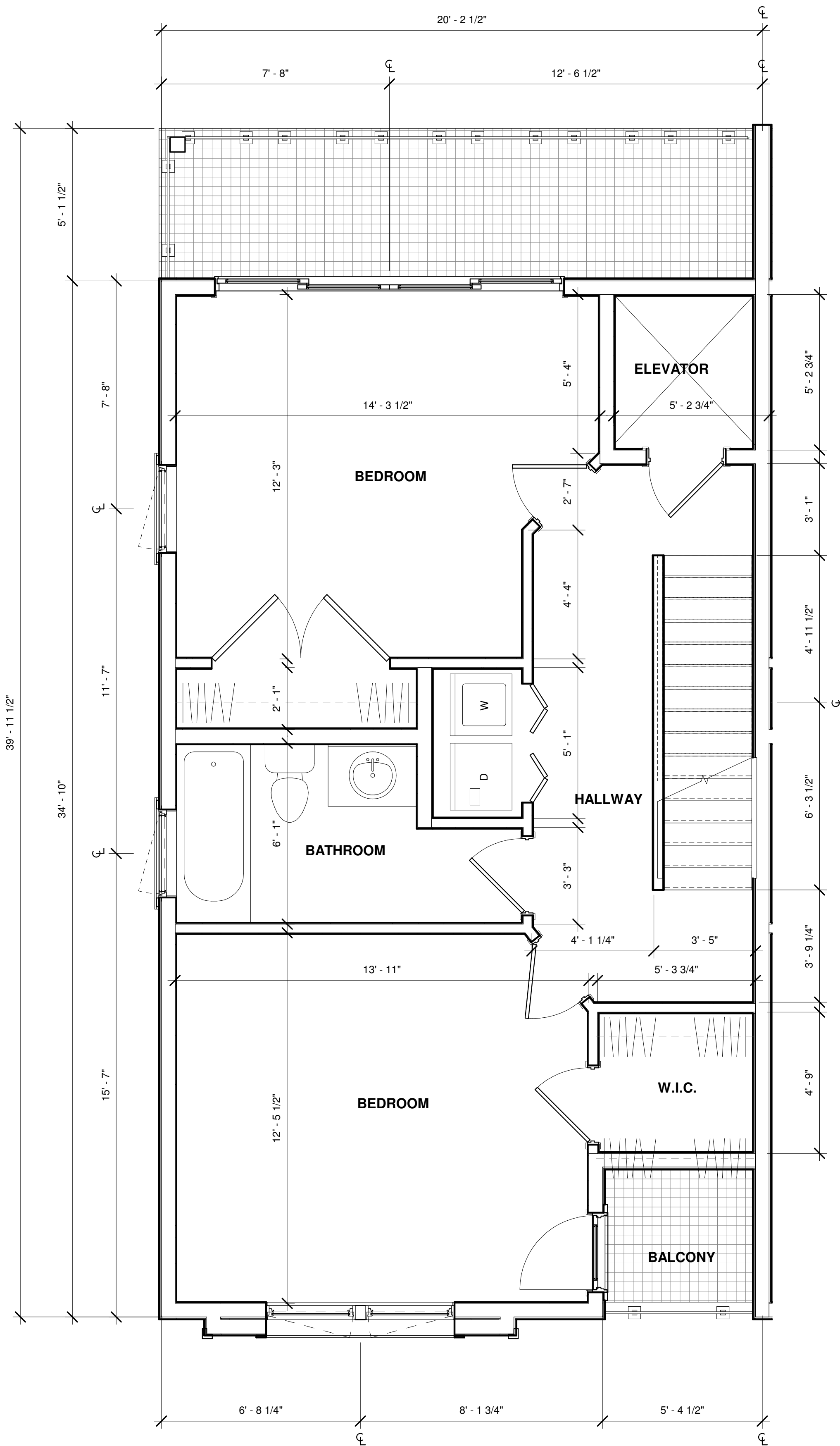
② ENLARGED 2ND FLOOR PLAN  
3/8" = 1'-0"



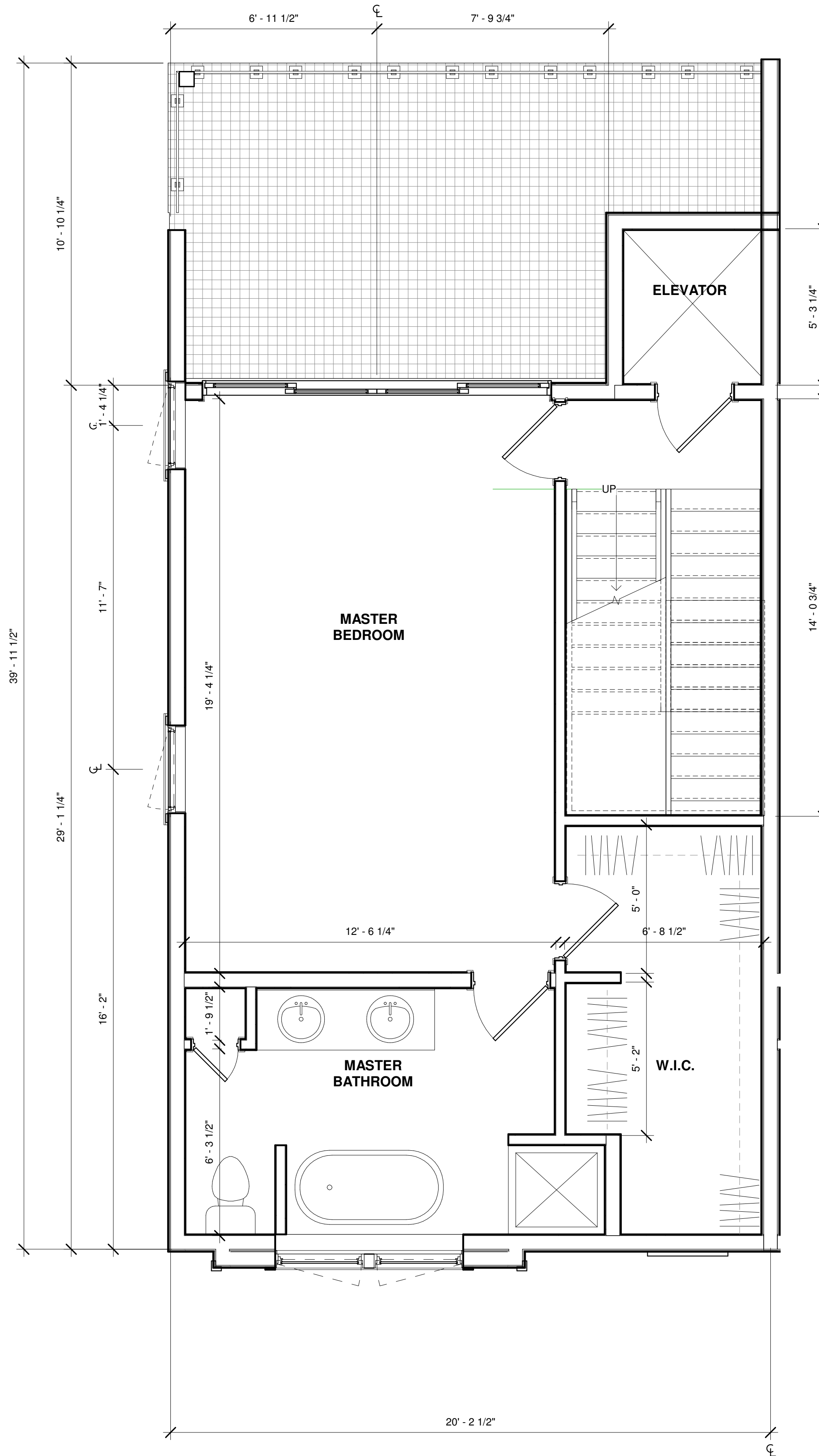
DENHOLTZ PROPERTIES  
NEW TOWNHOME DEVELOPMENT - MODEL B  
BLOCK: 13 LOT: 12  
SEA BRIGHT, NJ

REVISIONS / ISSUES		
No.	Description	Date
1	SITE PLAN SUBMISSION	09/09/2022

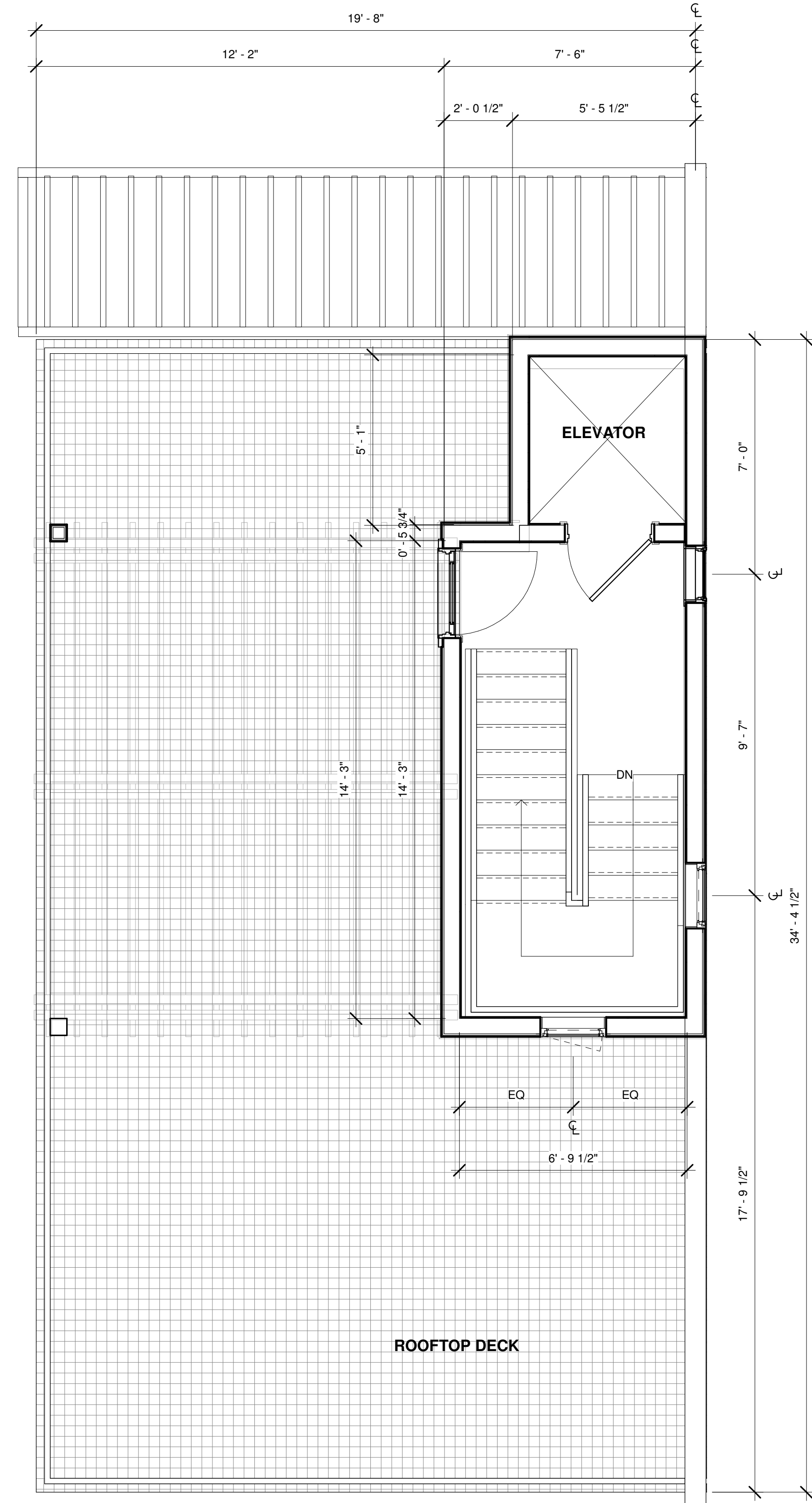
ENLARGED FLOOR PLANS



① ENLARGED 3RD FLOOR PLAN  
3/8" = 1'-0"



② ENLARGED 4TH FLOOR PLAN  
3/8" = 1'-0"



③ ENLARGED ROOF DECK PLAN  
3/8" = 1'-0"



DANIEL M. CONDATORE, RA  
NJ License #21A0173600

DENHOLTZ PROPERTIES  
NEW TOWNHOME DEVELOPMENT - MODEL B

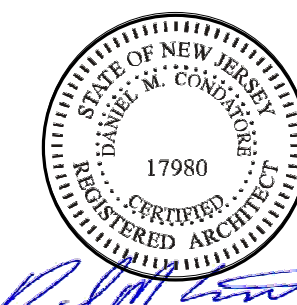
BLOCK: 13 LOT: 12  
SEA BRIGHT, NJ

REVISIONS / ISSUES

No.	Description	Date
1	SITE PLAN SUBMISSION	09/09/2022

ENLARGED FLOOR PLANS





DANIEL M. CONDATORE, RA  
NJ License #21A01736000

DENHOLTZ PROPERTIES  
NEW TOWNHOME DEVELOPMENT - MODEL B

BLOCK: 13 LOT: 12  
SEA BRIGHT, NJ



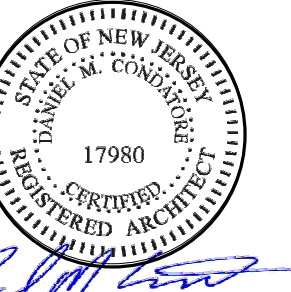
① FRONT ELEVATION  
3/16" = 1'-0"

REVISIONS / ISSUES		
No.	Description	Date
1	SITE PLAN SUBMISSION	09/09/2022

BUILDING  
ELEVATIONS

A200

DRAWN BY:  
CHECKED BY: DMC



DENHOLTZ PROPERTIES  
NEW TOWNHOME DEVELOPMENT - MODEL B

BLOCK: 13 LOT: 12  
SEA BRIGHT, NJ



① REAR ELEVATION  
3/16" = 1'-0"

REVISIONS / ISSUES

No.	Description	Date
	SITE PLAN SUBMISSION	09/09/2022

BUILDING  
ELEVATIONS

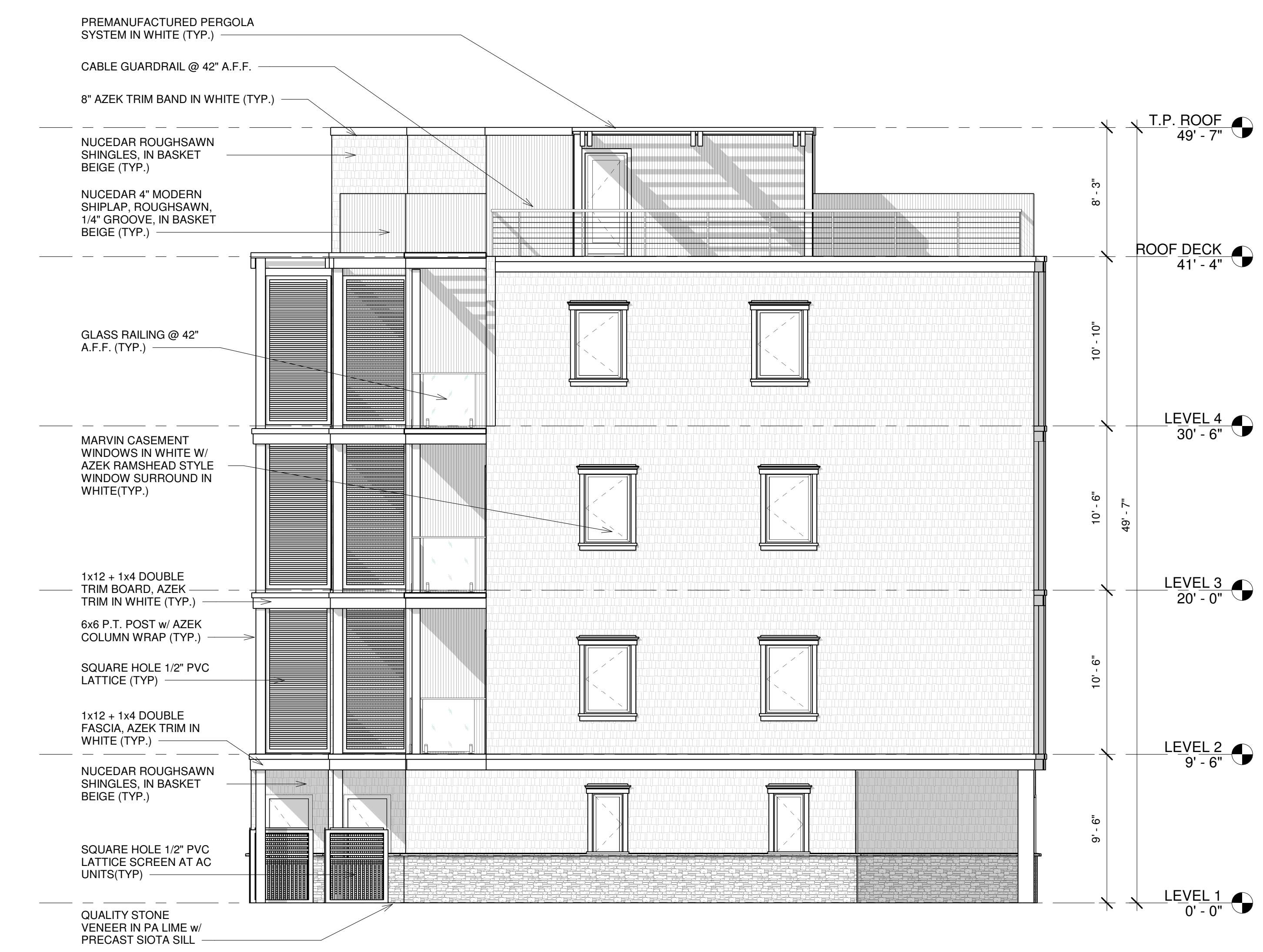
A201



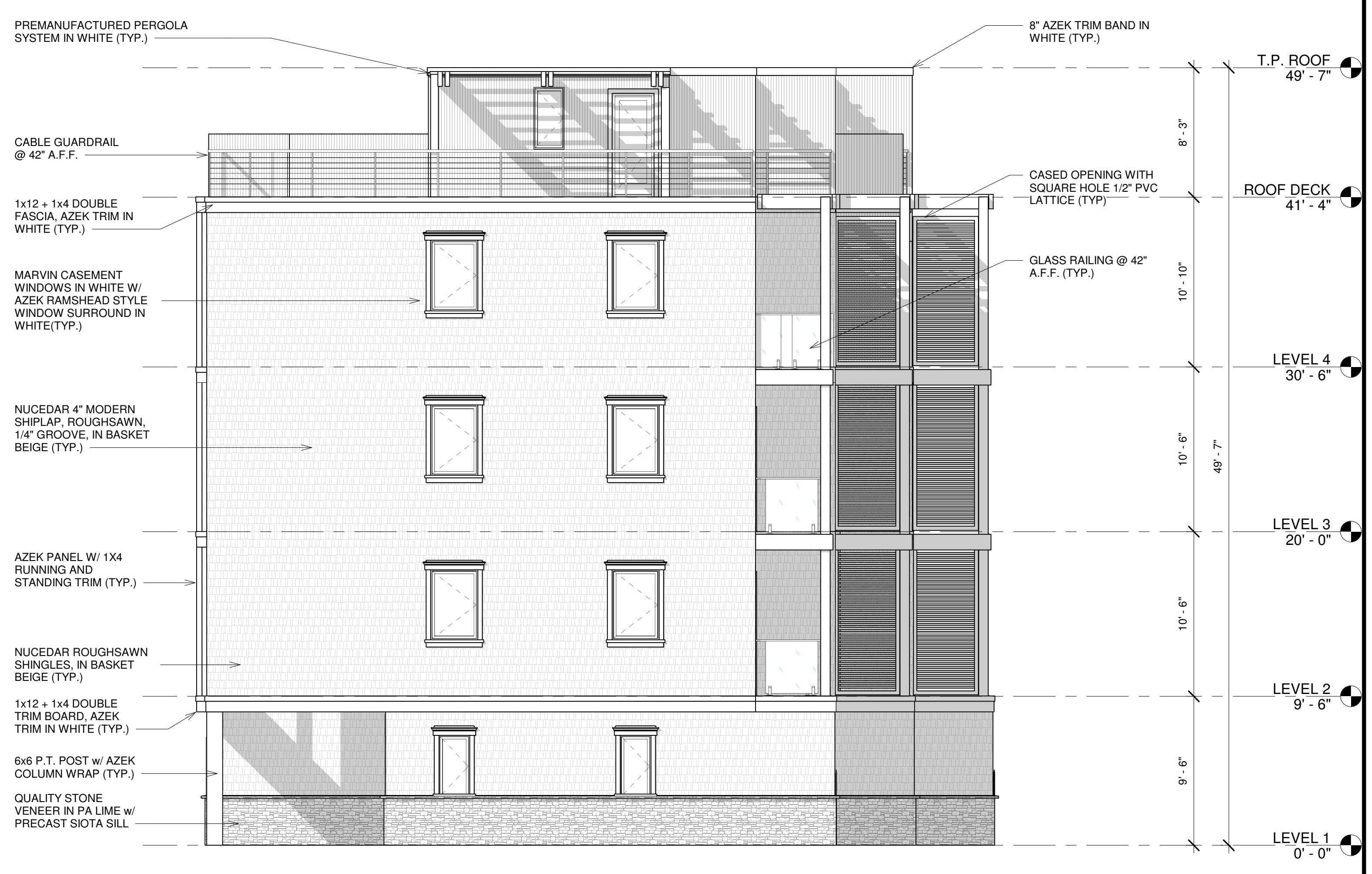
DANIEL M. CONDATORE, RA  
NJ License #21A01736000

DENHOLTZ PROPERTIES  
NEW TOWNHOME DEVELOPMENT - MODEL B

BLOCK: 13 LOT: 12  
SEA BRIGHT, NJ



① LEFT ELEVATION  
3/16" = 1'-0"



② RIGHT ELEVATION  
3/16" = 1'-0"

REVISIONS / ISSUES		
No.	Description	Date
1	SITE PLAN SUBMISSION	09/09/2022

BUILDING  
ELEVATIONS

A202

DRAWN BY:  
CHECKED BY: DMC